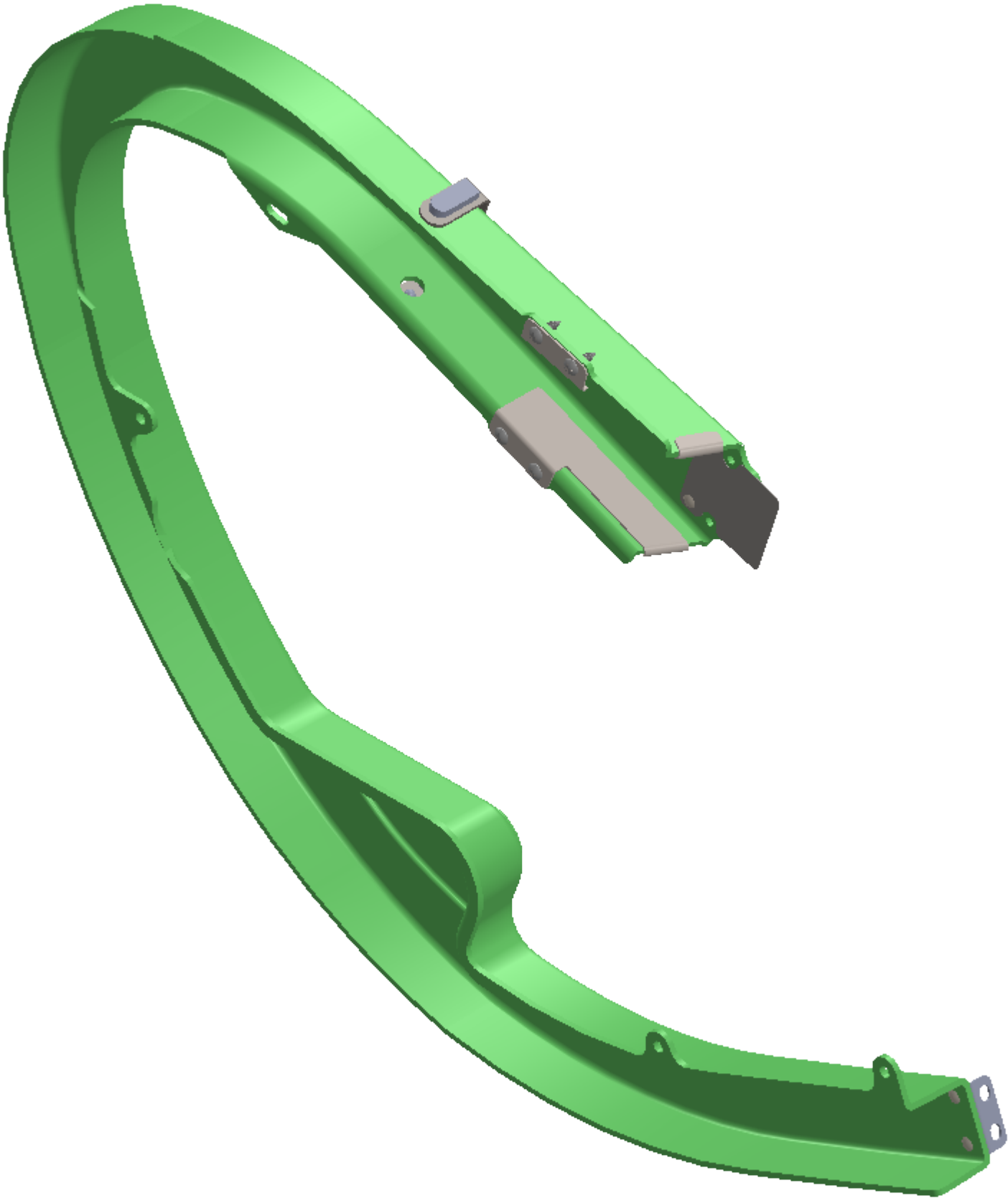
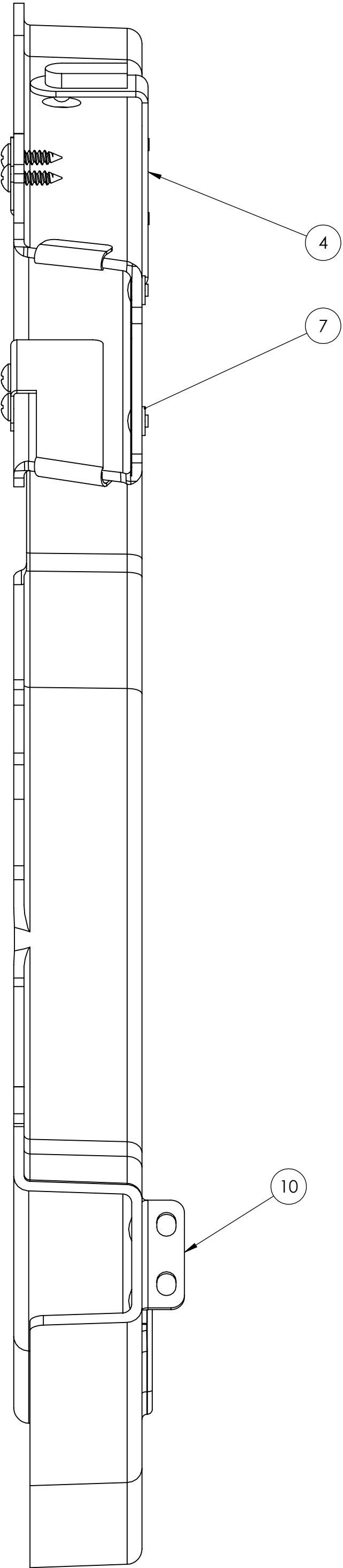
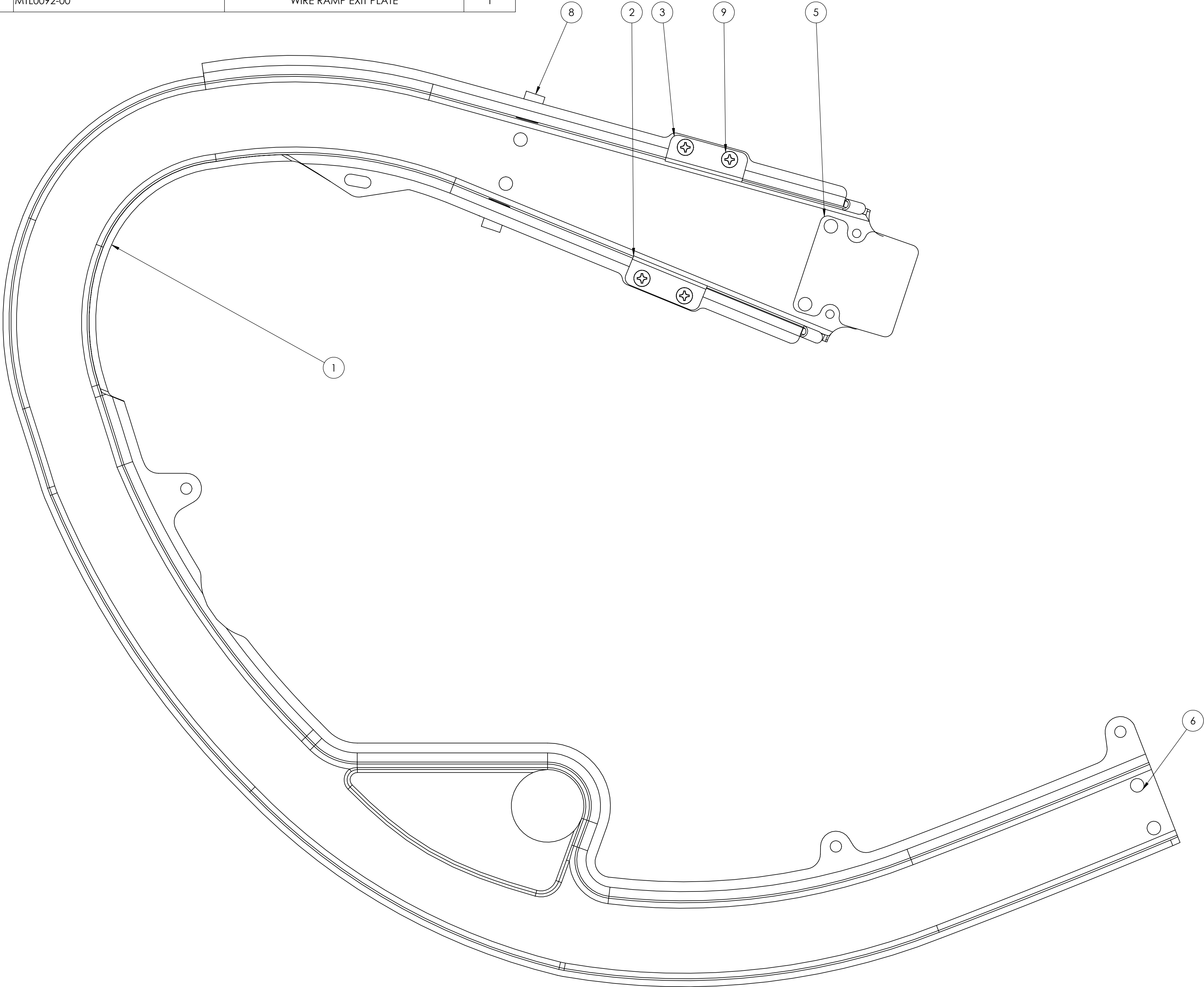



ITEM NO.	PART NUMBER	DESCRIPTION	QTY.
1	PLS0004-00C	HH PLASTIC RAMP	1
2	MTL0024-01B	RAMP PROTECTOR (LEFT)	1
3	MTL0024-00B	RAMP PROTECTOR (RIGHT)	1
4	MTL0033-00	RAMP OPTO BRACKET	1
5	MTL0027-00	HH RAMP FLAP	1
6	SPC0005-00	RIVET .13 X.18 STEEL NICKEL PLT.	6
7	WAS0004-00	#4 FLAT WASHER	2
8	WCA0016-00.	OPTEK INFARED LED ASSY	1
9	SMS7006-08	#6 X 1/2" TH SMS ZINC	4
10	MTL0092-00	WIRE RAMP EXIT PLATE	1



	UNLESS OTHERWISE SPECIFIED: NO SHARP CORNERS AND EDGES. TOLERANCES (DIM'S ARE IN INCHES) ANGULAR MATCH ± .5 DEG BEND ± 1 DEG FRACTIONAL ± .020 .X ± .015 .XX ± .010 .XXX ± .005 .XXXX ± .0001 FINISH 125RMS DO NOT SCALE DRAWING			AMERICAN PINBALL 1448 Yorkshire Dr. Streamwood, IL 60178		
	WATERSHAL: AS PER BOM			DESCRIPTION: HH PLASTIC RAMP ASSEMBLY		
	FINISH: -			SIZE	DWG. NO.	REV
	DRAWN BY:			D	ASM0044-00	
DRAWN DATE:			SCALE: 1:1		SHEET 1 OF 1	