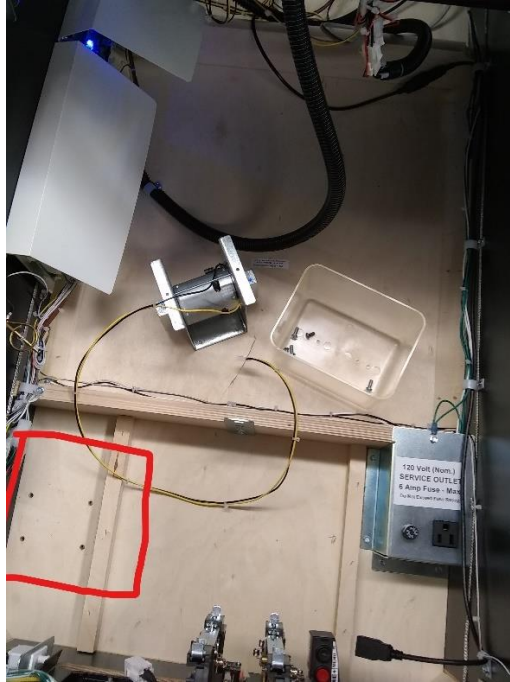


## SHAKER MOTOR INSTALLATION

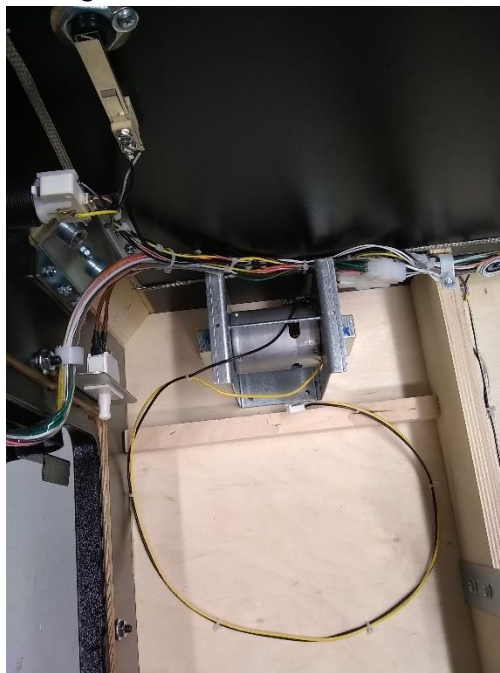
Installation time: Around 30 minutes.

Tools Needed: ¼" Nut Driver, Wire Cutters, Phillips Screw Driver

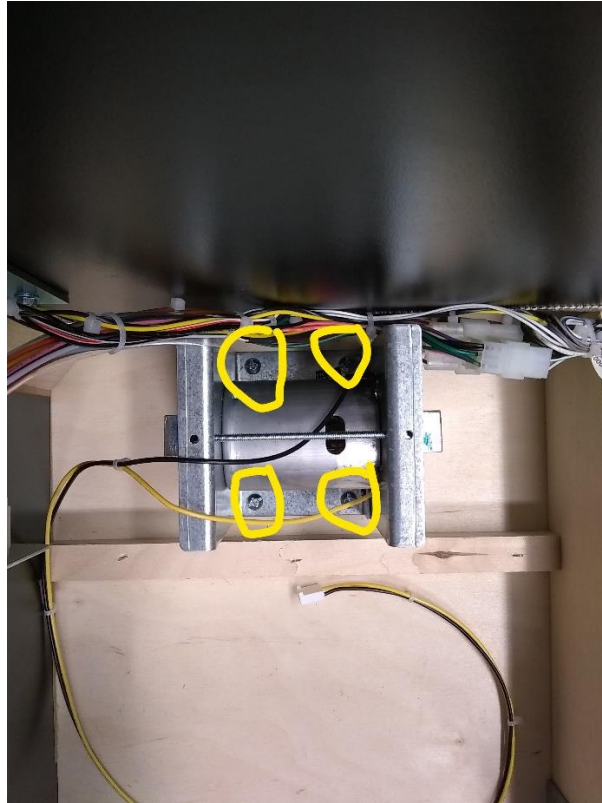
Parts Included in Kit: Shaker Motor, Cover, 6 Screws, 4 Wire Ties. *See picture for included parts and mounting location for shaker motor. See picture*



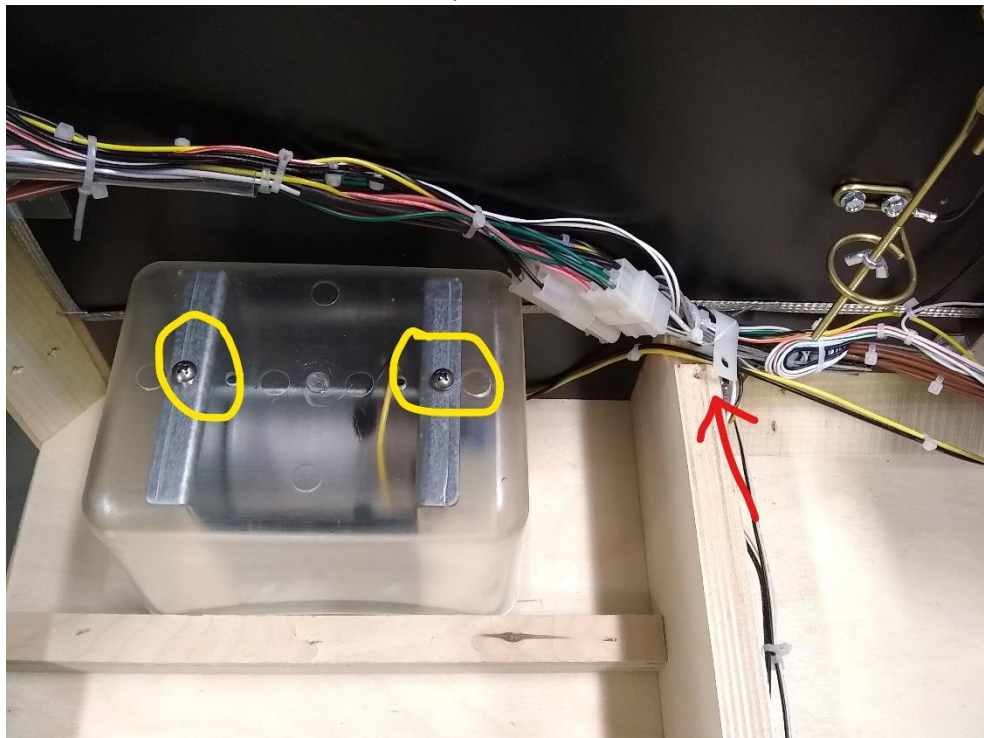
Turn game off remove glass and lift the playfield all the way up so it is leaning against the Backbox. Position shaker motor over mounting holes with wires orientated to the rear of the game. *See picture.*



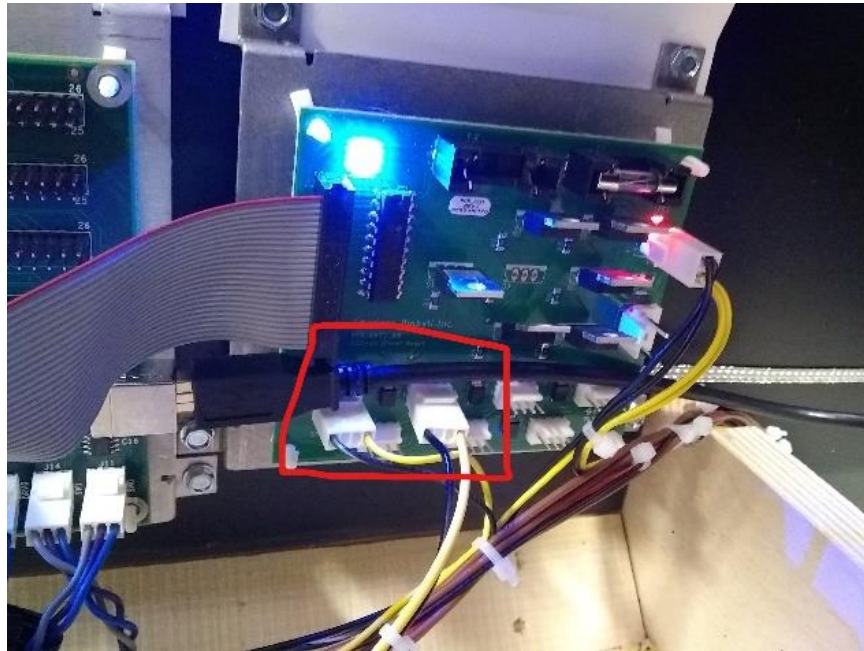
Using the 4 like screws fasten the shaker motor to the pinball. See picture.



Install shaker motor cover with the remaining screws be mindful that the cable is not in the path of the spinning weight. Then remove wire keeper and route shaker motor cable under it and replace screw. See picture.

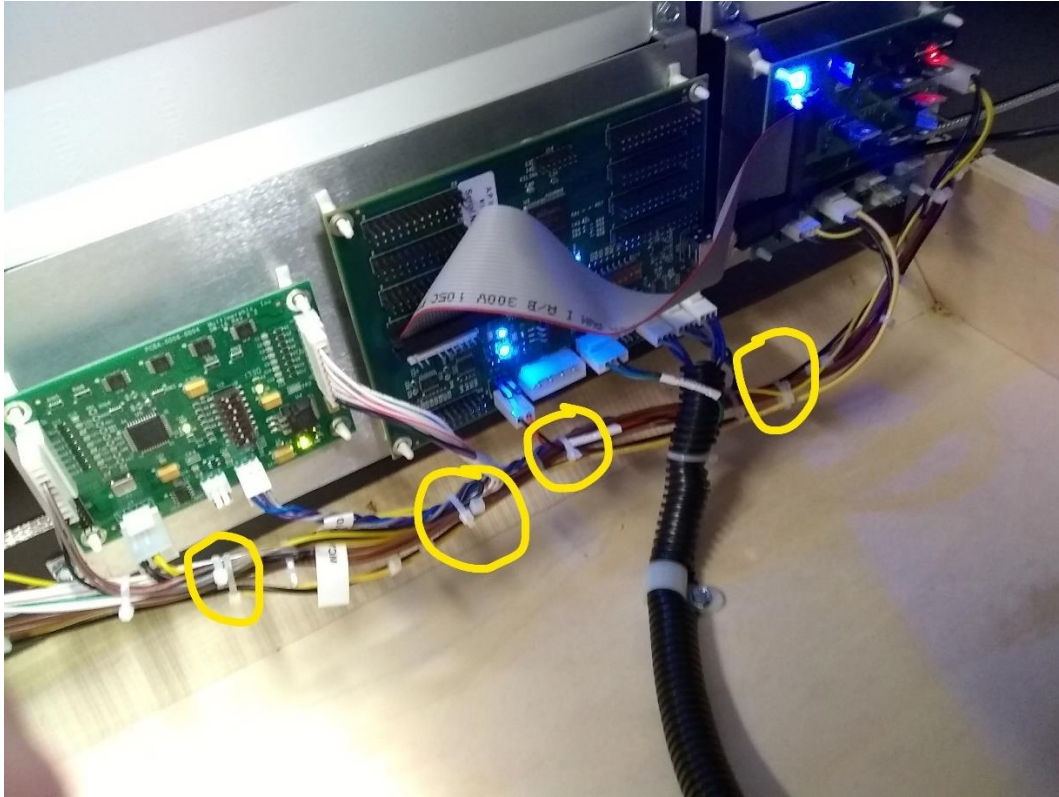


Route the shaker motor cable and plug into the ADD ON BOARD to DRV 2. See picture





Use the 4 wire ties to dress the wires, cut off extra. *See picture*



Power on game.

Go into Test>Settings>Standard, highlight shaker motor and change from off to on. Exit out to Test Mode, Test>Cabinet select shaker motor pull out interlock switch on left side of coin door and Enter, shaker motor should shake.

Congratulations. Enjoy your new feature. Shaker motor will turn on with the Pop Bumpers, Catapult Shot, Elephant mode along with other modes.

**Need Help??? 833.API.HELP**