



Oktoberfest Assembly Manual

“Assemblies On Tap”

ASSEMBLY	PAGE	ASSEMBLY	PAGE
INDEX	1	SINGLE OPTO	32
FLIPPER LEFT	2	WIRE GATE	33
FLIPPER LOWER RIGHT	3	BUMPER RING	34
FLIPPER UPPER RIGHT	4	48 VOLT FILTER BOARD	35
POP BUMPER	5	BAR SWITCH	36
SLING SHOT	6	CABINET	37
BALL TROUGH	7	BACK BOX	38
FIXED MAGNET	8		
ADJUSTABLE MAGNET	9		
SCOOP – SUPER VUK	10		
AUTO LAUNCH	11		
VUK	12		
CABINET POWER BOX	13		
CABINET PCB	14		
COIL DRIVER	15		
CBALL SHOOTER	16		
DROP TARGET	17		
BAR TENDER	18		
RAMP	19		
SPINNER	20		
SUBWAY	21		
COASTER LOCK	22		
BEER BARREL LOCK	23		
UP RAMP COIL	24		
RAMP FLOOR	25		
DUAL OPTO	26		
DUAL OPTO NARROW	27		
SWITCH / OPTO BOARD	28		
SINGLE SWITCH BOARD	29		
POWER SUPPLY	30		
PLASTIC RAMP	31		

Flipper Left ASM0001-00A

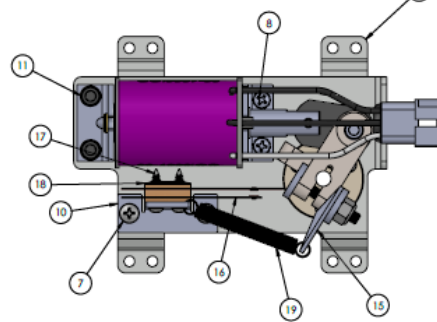
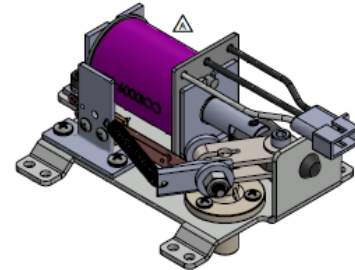
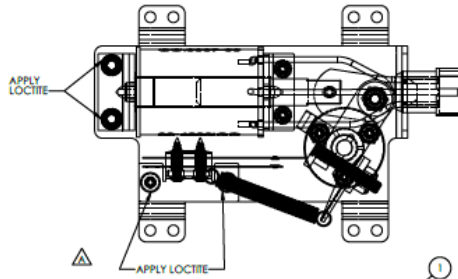
REV	DESCRIPTION	REVISIONS	DATE	APPROVED
A	ADDED A DETAIL VIEW CHANGED NOTE ON LOCTITE CHANGED SPRING TO SPR0013-00		1/30/2019	

ITEM NO.	PART NUMBER	DESCRIPTION	QTY.
1	MTL0107-00	LT FLIPPER BRACKET	1
2	SUB0025-00	FLIPPER STOP BRKT ASSY.	1
3	COI0003-00	FL11629 LUGLESS COIL	1
4	MTL0104-00	COIL RETAINING BRKT	1
5	PLS0049-00	FLIPPER BUSHING	1
6	PLS0047-00	COIL TUBING	1
7	MAS0008-05	8-32 X 5/16" PPH MS ZINC	2
8	MAS1004-04	6-32 X 1/4" PPH MS SEMS ZINC	2
9	RBR0011-00	FLIPPER BUMPER PLUG	1
10	MTL0105-00	EOS SWITCH BRKT	1
11	MAS4010-06	10-32 X 3/8" SOCKET HEAD BLACK	2
12	WAS1010-00	# 10 SPLIT LOCK WASHER	2
13	MAS0004-04	6-32 X 3/8" PPH MS ZINC	3
14	NUT0004-00	6-32 NYLON LOCKNUT	3
15	ASM0055-01	LT FLIPPER CRANK LINK ASSY	1
16	SW0026-00	EOS SWITCH	1
17	MTL0165-00	EOS SWITCH PLATE	1
18	SMS0005-10	#5 X 5/8" PPH SMS ZINC	2
19	SPR0013-00	COIL RETAINING SPRING - HEAVY	1

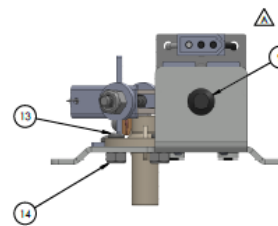
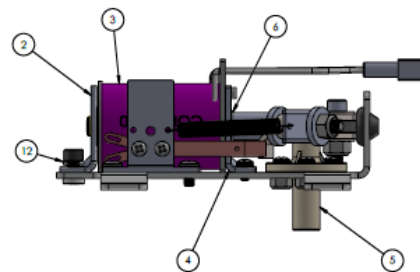
NOTE: TO BE MOUNTED USING QTY. 8 OF SMS2008-08

Flipper Lower Right ASM0002-01A


REVISIONS			
REV.	DESCRIPTION	DATE	APPROVED
A	CHANGED DRAWING TO SPECIFIED CHANGED NOTE ON LOCOTE CHANGED COLOR OF COIL	1/06/2019	



ITEM NO.	PART NUMBER	DESCRIPTION	QTY.
1	MIL0106-00	RT FLIPPER BRACKET	1
2	SUB0025-00	FLIPPER STOP BRKT ASSY.	1
3	COI0009-00	22-900/31-2700 LUGLESS COIL	1
4	MIL0104-00	COIL RETAINING BRKT	1
5	FL50048-00	FLIPPER BUSHING	1
6	PL50047-00	COIL TUBING	1
7	MAS0008-05	8-32 X 5/16" PPH MS ZINC	2
8	MAS1006-04	6-32 X 1/4" PPH MS SEMS ZINC	2
9	BR0011-00	FLIPPER BUMPER PLUG	1
10	MIL0105-00	ECS SWITCH BRKT	1
11	MAS4010-06	10-32 X 3/8" SOCKET HEAD BLACK	2
12	WAS1010-00	# 10 SPLIT LOCK WASHER	2
13	MAS0005-05	4-32 X 3/8" PPH MS ZINC	3
14	NUT0004-00	6-32 NYLON LOCKNUT	3
15	ASM0055-00	RT FLIPPER CRANK LINK ASSY	1
16	SW0026-00	ECS SWITCH	1
17	SMS0005-10	#5 X 5/8" PPH SMS ZINC	2
18	MIL0165-00	ECS SWITCH PLATE	1
19	SPR0015-00	COIL RETAINING SPRING - HEAVY	1



NOTE : TO BE MOUNTED USING QTY. 8 OF SMS2008-08


AMERICAN PINBALL 1485 Yorkville Dr. Bensenville, IL 60015
 (815) 475-1000
 WWW.AMERICANPINBALL.COM

DESIGNED BY: J. B. BROWN
 DRAWN BY: J. B. BROWN
 CHECKED BY: J. B. BROWN
 DATE: 1/06/2019

PART NAME: FLIPPER ASSEMBLY - RIGHT - 22-900/31-2700
 SIZE: C
 DWG. NO.: ASM0002-01
 REV: A

SHEET 1 OF 1

Flipper Upper Right ASM0002-02A

REVISIONS			
REV.	DESCRIPTION	DATE	APPROVED
A	CHANGED SPRING FROM SPR008-00 TO SPR0013-00 NOTE ON LOCTITE UPDATED	1/06/2019	

ITEM NO.	PART NUMBER	DESCRIPTION	QTY.
1	MTL0104-03	RT FLIPPER BRKT - LWR LT LEG CUT	1
2	SUB0025-00	FLIPPER STOP BRKT ASSY.	1
3	C.O0003-00	FL11629 LUGLESS COIL	1
4	MTL0104-00	COIL RETAINING BRKT	1
5	PLS0048-00	FLIPPER BUSHING	1
6	PLS0047-00	COIL TUBING	1
7	MAS0008-05	8-32 X 5/16" PPH MS ZINC	2
8	MAS1006-04	6-32 X 1/4" PPH MS SEMS ZINC	2
9	RBR0011-00	FLIPPER BUMPER PLUG	1
10	MTL0105-00	EOS SWITCH BRKT	1
11	MAS4010-06	10-32 X 3/8" SOCKET HEAD BLACK	2
12	WAS1010-00	# 10 SPLIT LOCK WASHER	2
13	MAS0006-06	6-32 X 3/8" PPH MS ZINC	3
14	NLT0006-00	6-32 NYLON LOCKNUT	3
15	ASM0055-00	RT FLIPPER CRANK LINK ASSY	1
16	SPR0013-00	COIL RETAINING SPRING - HEAVY	1

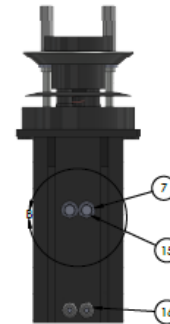
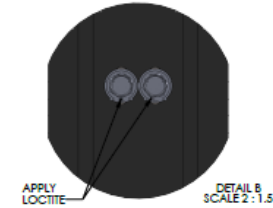
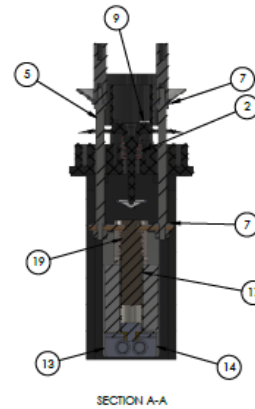
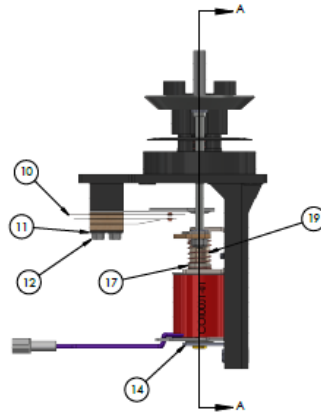
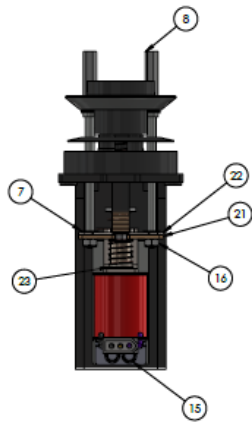
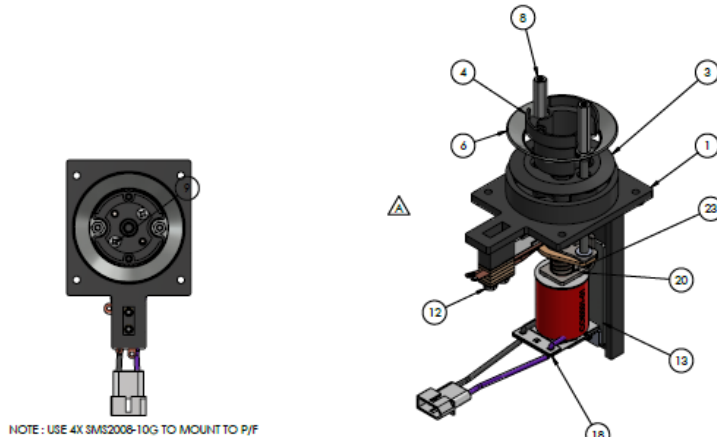
NOTE : TO BE MOUNTED USING QTY. 6 OF SMS208-08

SPEED OVERHEAT PROTECTED 1/2" SHAFT COMPATIBLE MOTOR 120V/60HZ/1.0HP/AB 50/5000 RPM 1.0HP/0.75KW/1.0HP/5000 RPM 1.0HP/0.75KW/1.0HP/5000 RPM 1.0HP/0.75KW/1.0HP/5000 RPM 1.0HP/0.75KW/1.0HP/5000 RPM 1.0HP/0.75KW/1.0HP/5000 RPM	AMERICAN PINBALL 1448 Yorkville Dr., Steamwood, IL 60107 630-971-0000 WWW.AMERICANPINBALL.COM	DESCRIPTION: FLIPPER ASSEMBLY - RIGHT (LWR LT LEG CUT) SIZE DWG. NO. C ASM0002-02 REV A
--	---	--

Pop Bumper ASM0003-00A

REVISIONS			
REV.	DESCRIPTION	DATE	APPROVED
A	ASSEMBLY REDESIGN ADDED MFL0084-00 SWITCH PLATE	03/01/2019	

ITEM NO.	PART NUMBER	DESCRIPTION	QTY.
1	PL30021-00	BUMPER HOUSING	1
2	SPR0004-00	BUMPER SKIRT SPRING	1
3	PL30033-00	BUMPER SKIRT - BLACK	1
4	PL30032-00	BUMPER BODY - BLACK	1
5	MCH0013-00	BUMPER ROD	2
6	MCH0012-00	BUMPER RING	1
7	WAS0006-00	#6 FLAT WASHER	8
8	HEX0405-20	1/4" HEX SPACER X 1-1/4" 6-32 FEMALE TAPPED ENDS	2
9	SMS0006-14	#6 X 7/8" PPH SMS ZINC	2
10	SW00019-00	BUMPER SWITCH	1
11	MTL0087-00	SWITCH PLATE	1
12	MAS2005-16	6-32 X 1" HWH SERRATED FLANGE SCREW	2
13	MTL0084-00	BUMPER SPACING PLATE	1
14	SUB0024-00	COIL STOP BRACKET ASSEMBLY	1
15	MAS2006-06	6-32 X 1/2" HWH MS ZINC	4
16	NUT0006-00	6-32 LOCKNUT	4
17	PL30035-00	COIL SLEEVE 1-3/4" X 1/2" NO FLANGE	1
18	COI0001-01	23-800 LUGLESS COIL	1
19	PGR0008-00	BUMPER PLUNGER	1
20	MTL0083-00	BUMPER YOKE STOP BRKT	1
21	MSC0022-00	BUMPER YOKE FIBER	1
22	MTL0084-00	BUMPER YOKE METAL	1
23	SPR0005-00	BALL TROUGH SPRING	1

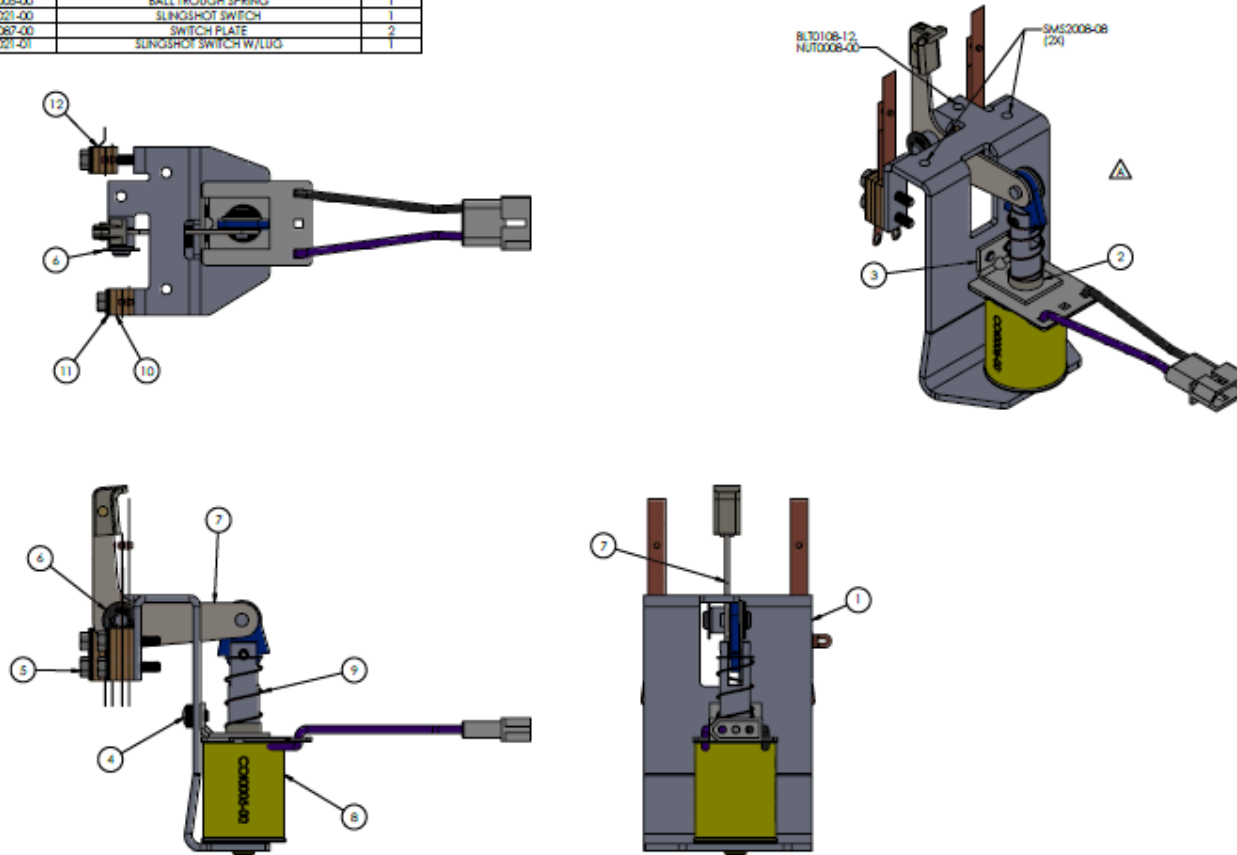


	(UNLESS OTHERWISE SPECIFIED) DIMENSIONS ARE IN INCHES DIMENSIONS IN PARENTHESIS ARE MILLIMETER EQUIVALENTS FINISH: 1.000 MATERIAL: 304 SS	AMERICAN PINBALL 1448 Yorkville Dr. Bensenville, IL 60015 WWW.AMERICANPINBALL.COM
	DESCRIPTION: BOTTOM POP BUMPER ASSEMBLY - 23-800	SIZE: C DWG. NO.: ASM0003-00 REV: A

Slingshot ASM0004-01A

ITEM NO.	PART NUMBER	DESCRIPTION	QTY
1	SUB0011-00	SLINGSHOT BRACKET ASSEMBLY	1
2	PL30035-00	COIL SLEEVE 1-3/4" X 1/2" NO FLANGE	1
3	MT10082-00	8-32 TAPPED STANDARD COIL MOUNTING BRACKET	1
4	MAS1008204	8-32 X 1/4" PPH MS SEMI ZINC	2
5	MAS2006-12	6-32 X 3/4" HWH SERRATED FLANGE SCREW	4
6	SPC0003-04	1/4" SHAFT RETAINING RING E-STYLE	1
7	ASM0072-00	SLINGSHOT BELLCRANK & PLINGER ASSEMBLY	1
8	CC00005-00	26-1200 LUGLESS COIL	1
9	SPR0005-00	BALL TROUGH SPRING	1
10	SW10021-00	SLINGSHOT SWITCH	1
11	MT10087-00	SWITCH PLATE	2
12	SW10021-20	SLINGSHOT SWITCH W/LUGS	1

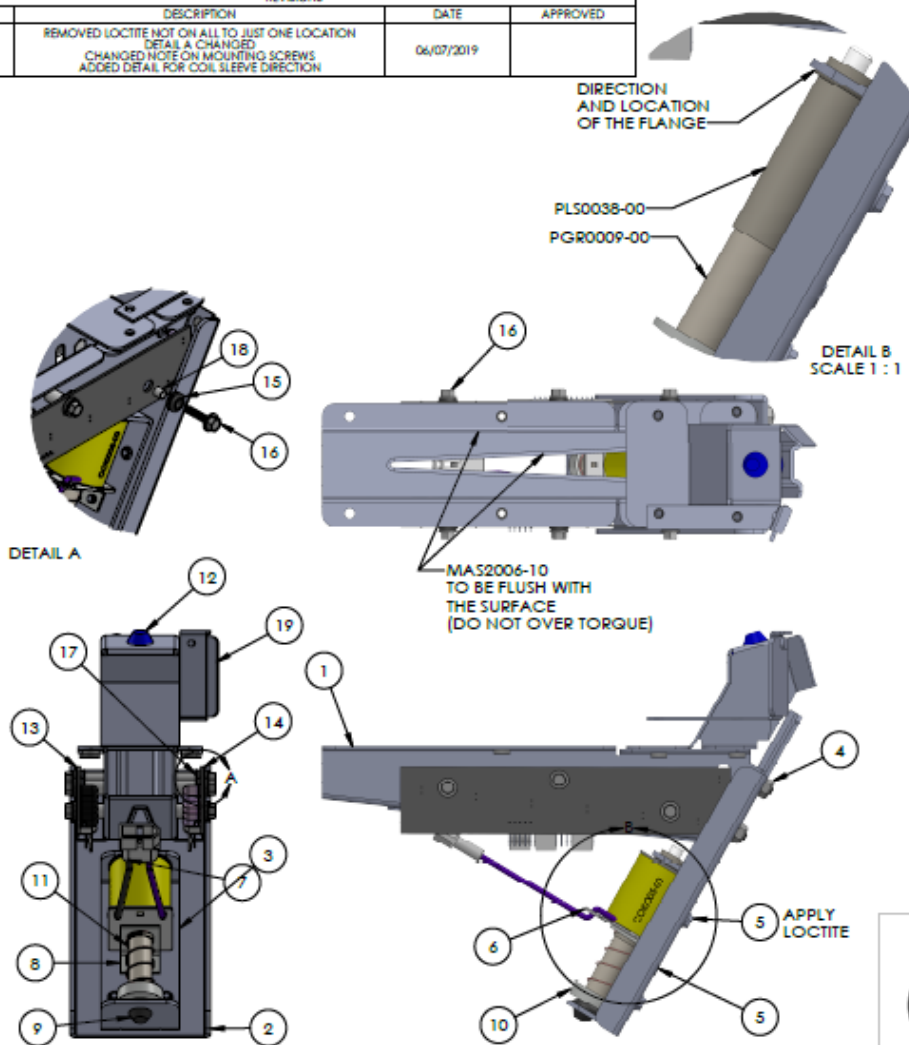
REVISE			
REV.	DESCRIPTION	DATE	APPROVED
A	SMAS0068 CHANGED TO QTY. 2 ADDED LOCATION FOR BL30108-12 AND NUT0006-00 REMOVED NOTE ON LOCITE	1/26/2019	



ALL BALL CHAINWELLS SPECIFIED TO BE SHIMONOSUKE (JAPAN) MANUFACTURED IN INCHES UNLESS OTHERWISE SPECIFIED UNLESS OTHERWISE SPECIFIED UNLESS OTHERWISE SPECIFIED UNLESS OTHERWISE SPECIFIED	AMERICAN FINBALL 1400 Turnpike Dr., Westborough, MA 01581 TEL: 508-853-2200 FAX: 508-853-2201 WWW.AMERICANFINBALL.COM	DESCRIPTION SLINGSHOT ASSEMBLY - 26-1200 SEE DRWG. NO. C ASM0004-01	REV A
--	--	---	-----------------

Ball Trough ASM0005-01A

REVISIONS			
REV.	DESCRIPTION	DATE	APPROVED
A	REMOVED LOCTITE NOTE ON ALL TO JUST ONE LOCATION DETAIL A CHANGED CHANGED NOTE ON MOUNTING SCREWS ADDED DETAIL FOR COIL SLEEVE DIRECTION	06/07/2019	



DIRECTION AND LOCATION OF THE FLANGE

PLS0038-00
PGR0009-00

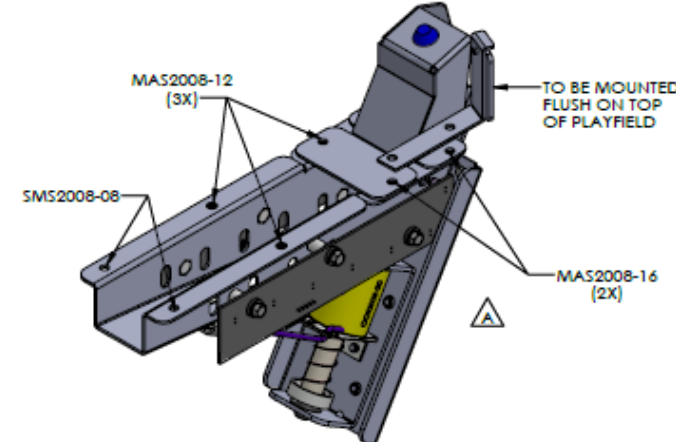
DETAIL B
SCALE 1 : 1

DETAIL A

MA52006-10
TO BE FLUSH WITH THE SURFACE
(DO NOT OVER TORQUE)

APPLY LOCTITE

ITEM NO.	PART NUMBER	DESCRIPTION	QTY.
1	MTL0089-00	BALL TROUGH WELDED ASSEMBLY	1
2	MTL0090-00	BALL TROUGH FRONT BRACKET	1
3	MTL0091-00	COIL MOUNTING BRACKET	1
4	NUT0008-00	8-32 NYLON LOCKNUT - LOW PROFILE	4
5	MAS2008-04	8-32 X 1/4" HWH MS ZINC	6
6	COI0005-00	26-1200 LUGLESS COIL	1
7	PLS0038-00	COIL SLEEVE 1-7/8" X 3/16" FLANGE	1
8	MTL0082-00	8-32 TAPPED STANDARD COIL MOUNTING BRACKET	1
9	RBR0011-00	FLIPPER BUMPER PLUG	1
10	PGR0009-00	BALL TROUGH PLUNGER ASSY	1
11	SPR0005-00	BALL TROUGH SPRING	1
12	RBR0014-00	BALL TROUGH BUMPER PLUG	1
13	PCB0019-00	BALL TROUGH RECIEVER BOARD	1
14	PCB0019-01	BALL TROUGH TRANSMITTER BOARD	1
15	RBR0015-00	PCB RUBBER GROMMET	6
16	MAS2006-10	6-32 X 5/8" HWH MS ZINC	6
17	WAS0006-00	#6 FLAT WASHER	6
18	MCH0016-00	BALL TROUGH BUSHING	6
19	MTL0093-00	BALL STOP BRACKET	1



MAS2008-12 (3X)

SMS2008-08

TO BE MOUNTED FLUSH ON TOP OF PLAYFIELD

MAS2008-16 (2X)

UNLESS OTHERWISE SPECIFIED:
NO SHARP CORNERS AND EDGES.
TOLERANCES ARE IN PARENTS
ANGULAR TOLERANCES ARE 1 DEG
FINISH 12.5
FRACTIONAL ± .005
3X .010
2X .010
1X .010
FRESH LOGGING

AMERICAN PINBALL 1448 Yorkshire Dr. Streamwood, IL 60107

AS PER BOM

DESCRIPTION:
6 BALL TROUGH ASSEMBLY-26-1200

SIZE DWG. NO. REV
B ASM0005-01 A

DO NOT SCALE DRAWING

DRAWN BY: REM

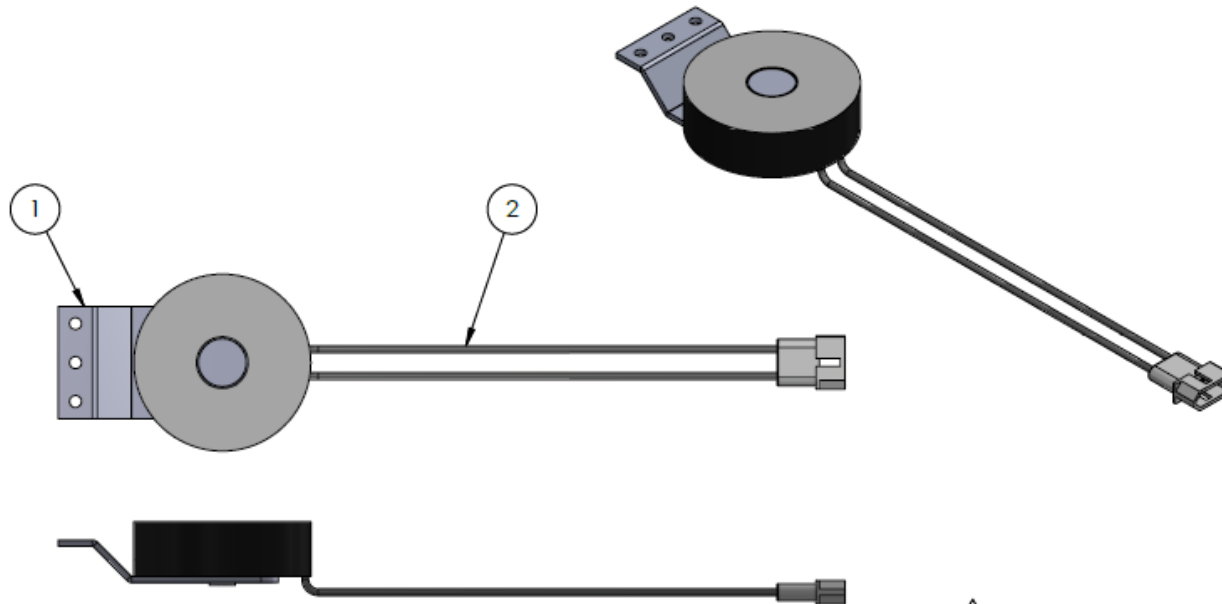
DATE: 6/15/2019 SCALE: 1:2 SHEET 1 OF 1

PROPRIETARY AND CONFIDENTIAL THE INFORMATION CONTAINED IN THIS DRAWING IS THE SOLE PROPERTY OF AMERICAN PINBALL. ANY REPRODUCTION IN PART OR AS A WHOLE WITHOUT THE WRITTEN PERMISSION OF AMERICAN PINBALL IS PROHIBITED.

Fixed Magnet ASM0009-00A

ITEM NO.	PART NUMBER	DESCRIPTION	QTY.
1	SUB0004-00	MAGNET CORE BRACKET	1
2	COI0002-00	MAGNET COIL	1

REVISIONS			
REV.	DESCRIPTION	DATE	APPROVED
A	UPDATED MOUNTING NOTE	1/25/2019	



NOTE : USE 3X SMS2008-08 TO MOUNT TO PLAYFIELD

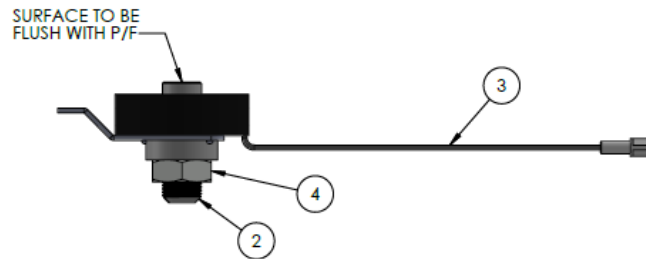
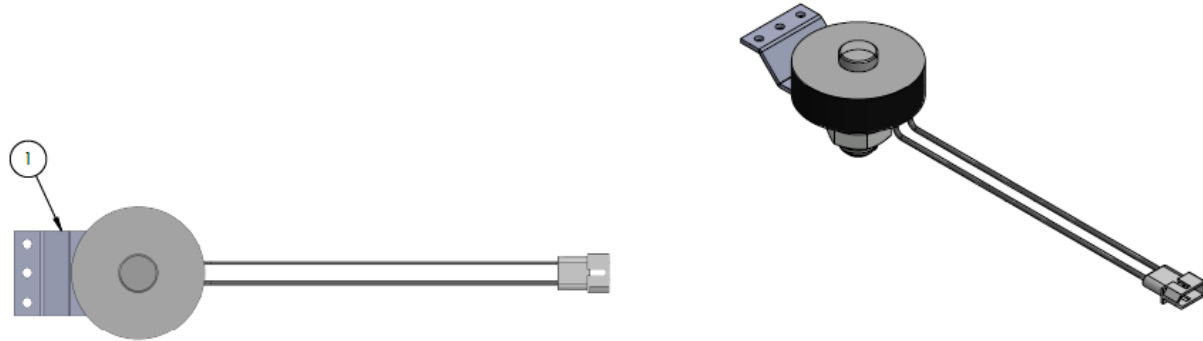
	UNLESS OTHERWISE SPECIFIED: NO SHARP CORNERS AND EDGES. TOLERANCES:(DIM'S ARE IN INCHES) ANGULAR: MACH ± .5 DEG BEND ± 1 DEG FRACTIONAL: ± .020 .X- ±.015 .XX- ±.010 .XXX- ±.005 .XXXX- ±.0001 FINISH 125RMS	AMERICAN PINBALL 1448 Yorkshire Dr. Streamwood, IL 60107 MATERIAL: AS PER BOM	DESCRIPTION: FIXED MAGNET ASSEMBLY
	DO NOT SCALE DRAWING 	FINISH:	SIZE DWG. NO. A ASM0009-00A
DRAWN BY: RM		DRAWN DATE: 1/25/2019	SCALE: 1:2 SHEET 1 OF 1

PROPRIETARY AND CONFIDENTIAL: THE INFORMATION CONTAINED IN THIS DRAWING IS THE SOLE PROPERTY OF AMERICAN PINBALL. ANY REPRODUCTION IN PART OR AS A WHOLE WITHOUT THE WRITTEN PERMISSION OF AMERICAN PINBALL IS PROHIBITED.


Adjustable Magnet ASM0009-01A

ITEM NO.	PART NUMBER	DESCRIPTION	QTY.
1	SUB0014-00	ADJUSTABLE MAGNET BRACKET	1
2	MCH0034-00	MAGNET CORE	1
3	COI0002-00	MAGNET COIL	1
4	NUT6034-00	3/4-16 JAM NUT	1

REVISIONS			
REV.	DESCRIPTION	DATE	APPROVED
A	ASSEMBLY REDRAWN	1/29/2019	



NOTE :
TO BE MOUNTED ON P/F USING 3X SMS2008-08

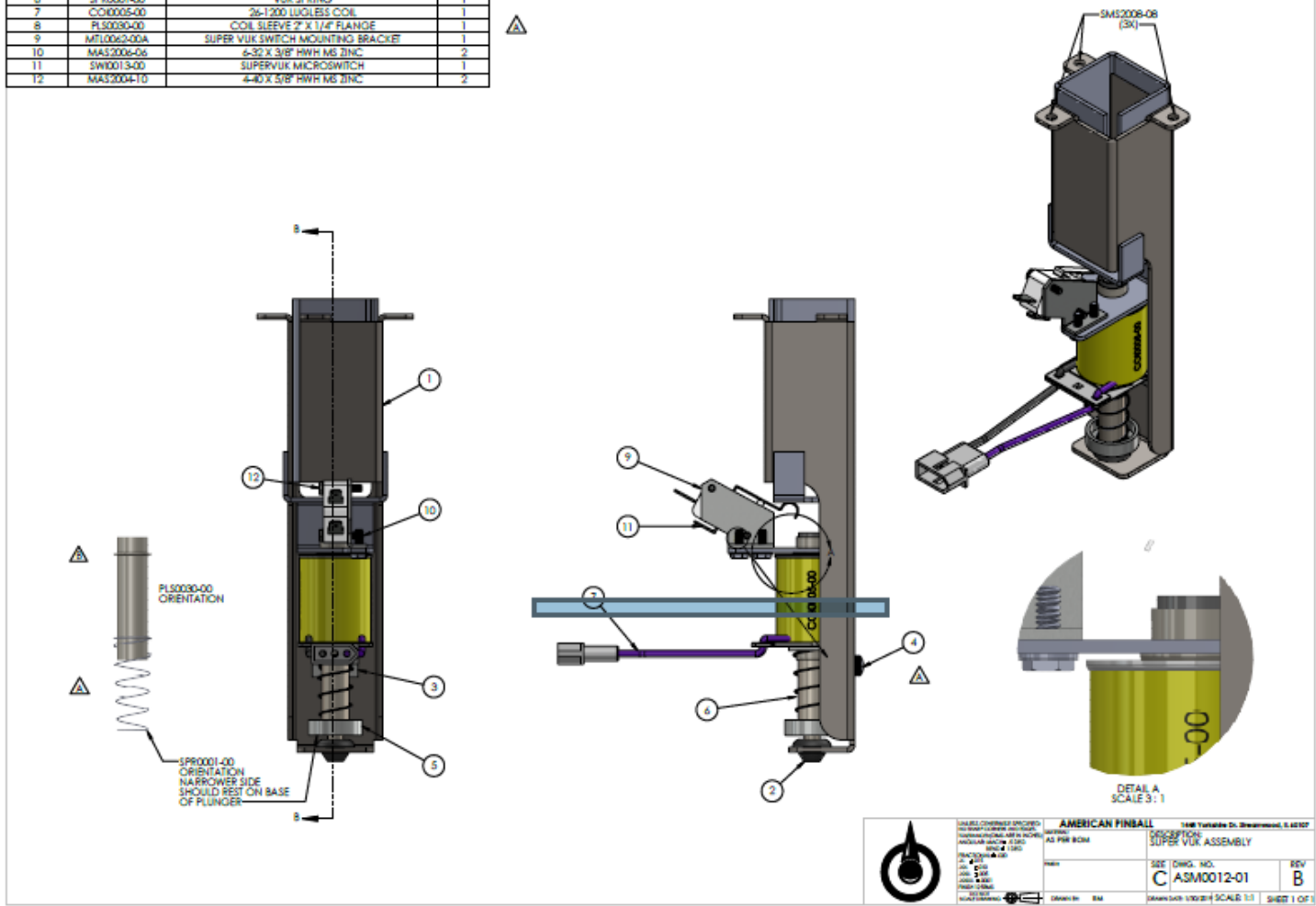
	UNLESS OTHERWISE SPECIFIED: NO SHARP CORNERS AND EDGES TOLERANCES (DIM. ARE IN INCHES) ANGULAR: MACH ± .5 DEG BEND ± 1 DEG FRACTIONAL: ± .005 DEC: ± .015 DEC: ± .010 DEC: ± .005 DEC: ± .0001 FINISH 125RMS	AMERICAN PINBALL MATERIAL: AS PER BOM	1448 Yorkshire Dr. Streamwood, IL 60107 DESCRIPTION: ADJUSTABLE MAGNET ASSEMBLY
	DO NOT SCALE DRAWING	DRAWN BY: RM	SIZE B DWG. NO. ASM0009-01

PROPRIETARY AND CONFIDENTIAL: THE INFORMATION CONTAINED IN THIS DRAWING IS THE SOLE PROPERTY OF AMERICAN PINBALL. ANY REPRODUCTION IN PART OR AS A WHOLE WITHOUT THE WRITTEN PERMISSION OF AMERICAN PINBALL IS PROHIBITED.

Scoop – Super VUK ASM 0012-01B

ITEM NO.	PART NUMBER	DESCRIPTION	QTY.
1	SUR001-00A	SUPER VUK WELDMENT (3T)	1
2	FR001-1-00	FLIPPER BUMPER PLUG	1
3	MTL002-00	8-32 TAPPED STANDARD COIL MOUNTING BRACKET	1
4	MAS1008-04	8-32 X 1/4" PPH MS SEM5 ZINC	2
5	PO0004-00	VUK PLUNGER	1
6	SPR001-00	VUK SPRING	1
7	CO0005-00	26-1200 LUGLESS COIL	1
8	PLS0030-00	COIL SLEEVE 2" X 1/4" FLANGE	1
9	MTL002-00A	SUPER VUK SWITCH MOUNTING BRACKET	1
10	MAS2004-06	6-32 X 3/8" RHW MS ZINC	2
11	SW0013-00	SUPER VUK MICROSWITCH	1
12	MAS2004-10	4-40 X 5/8" RHW MS ZINC	2

REVISIONS			
REV.	DESCRIPTION	DATE	APPROVED
A	CHANGED ORIENTATION OF SPRING REMOVED NOTCH FOR APPROX LOCATOR CHANGED DESCRIPTION FOR PLS0030-00	1/06/2019	
B	ADDED ORIENTATION FOR COIL SLEEVE (PLS0030-00) DETAIL VIEW CHANGED	07/09/19	



UNLESS OTHERWISE SPECIFIED
DIMENSIONS ARE IN INCHES
ANGULAR DIMENSIONS ARE IN DEGREES
FINISHES ARE AS PER BOM

AMERICAN FINBALL 148 Variable Dr. Brentwood, IL 60107

DESCRIPTION
SUPER VUK ASSEMBLY

REV B

SEE DWG. NO. C ASM0012-01

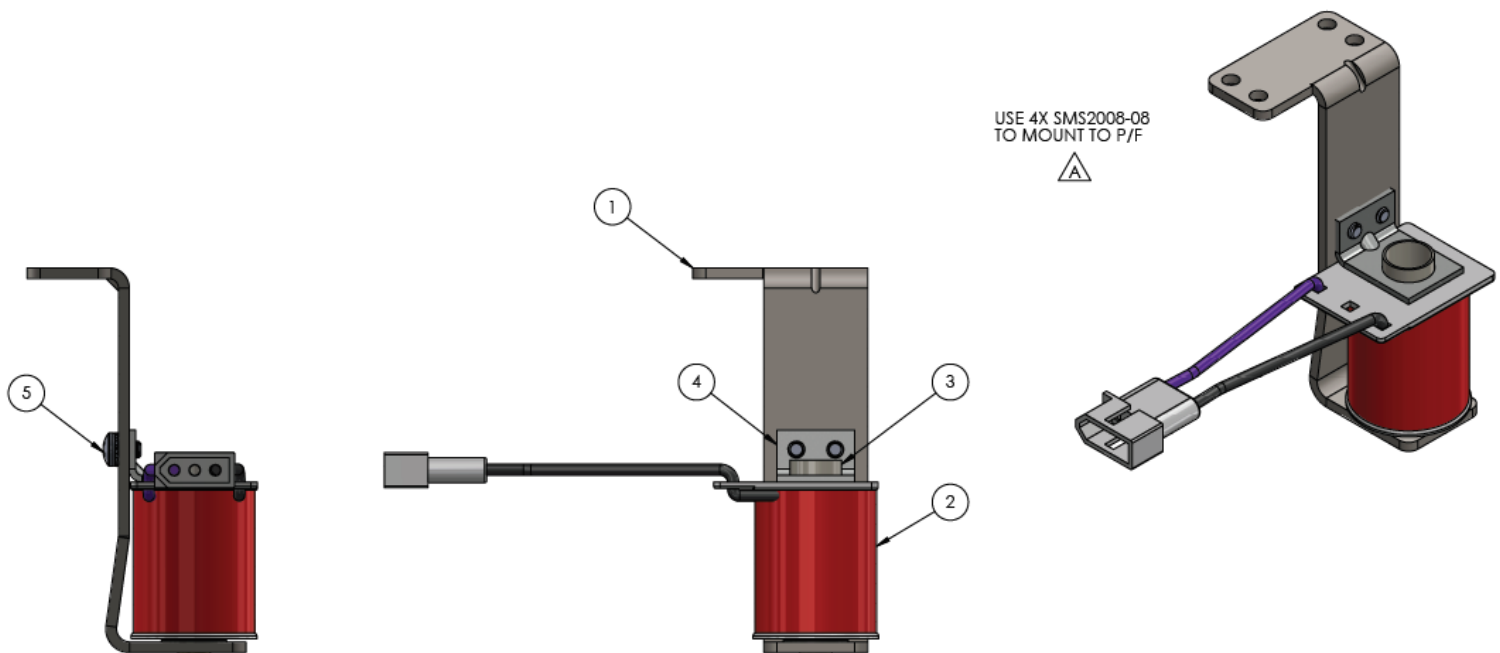
DATE: 07/09/19 SCALE: 1:1 SHEET 1 OF 1

Auto Launch ASM0015-01

ITEM NO.	PART NUMBER	DESCRIPTION	QTY.
1	SUB0008-00	AUTOLAUNCH COIL BRKT. ASSY.	1
2	COI0001-01	23-800 LUGLESS COIL	1
3	PLS0035-00	COIL SLEEVE 1-3/4" X 1/2" NO FLANGE	1
4	MTL0082-00	8-32 TAPPED STANDARD COIL MOUNTING BRACKET	1
5	MAS1008-04	8-32 X 1/4" PPH MS SEMS ZINC	2



REVISIONS			
REV.	DESCRIPTION	DATE	APPROVED
A	ADDED NOTE ON MOUNTING SCREW CHANGED MAS2008-06 TO MAS1008-04	1/28/2019	



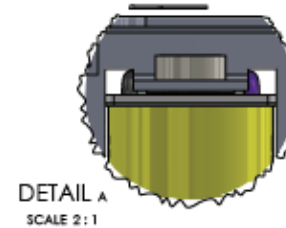
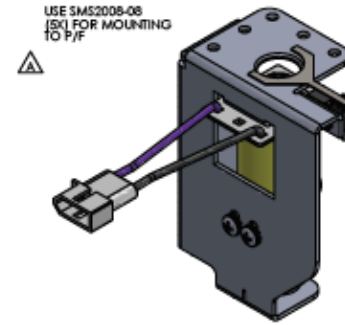
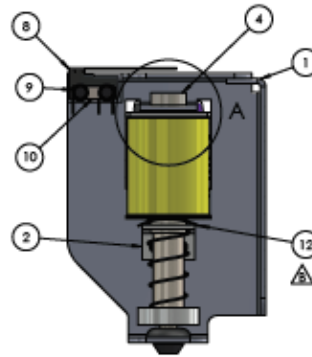
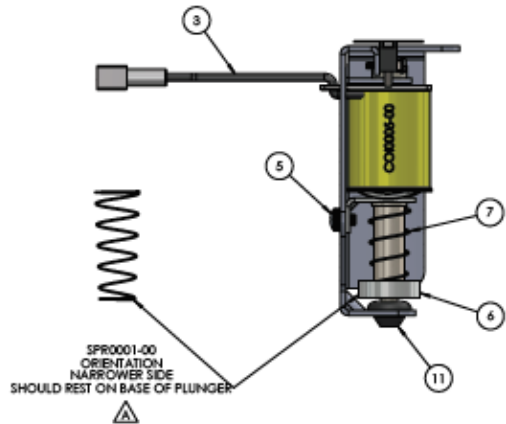
	UNLESS OTHERWISE SPECIFIED: NO SHARP CORNERS AND EDGES. TOLERANCES (DIM'S ARE IN INCHES) ANGULAR: MAX ± .5 DEG BEND ± 1 DEG FRACTIONAL: ± .025 .X. ± .015 .XX. ± .010 .XXX. ± .005 .XXXX. ± .0001 FINISH 125RMS DO NOT SCALE DRAWING	AMERICAN PINBALL MATERIAL: AS PER BOM	1448 Yorkshire Dr. Streamwood, IL 60107 DESCRIPTION: AUTOLAUNCH COIL BRACKET ASSEMBLY
	FINISH:	SIZE: B	DWG. NO.: ASM0015-00
DRAWN BY: RM		DRAWN DATE: 1/28/2019 SCALE: 1:1 SHEET 1 OF 1	

PROPRIETARY AND CONFIDENTIAL: THE INFORMATION CONTAINED IN THIS DRAWING IS THE SOLE PROPERTY OF AMERICAN PINBALL. ANY REPRODUCTION IN PART OR AS A WHOLE WITHOUT THE WRITTEN PERMISSION OF AMERICAN PINBALL IS PROHIBITED.

VUK ASM0018-01B

ITEM NO.	PART NUMBER	DESCRIPTION	QTY.
1	MTL0088-00	VUK ASSEMBLY - LEFT SIDE MOUNT	1
2	MTL0082-00	8-32 TAPPED STANDARD COIL MOUNTING BRACKET	1
3	COI0005-00	26-1200 LUGLESS COIL	1
4	PLS0030-00	COIL SLEEVE 2" X 1/4" FLANGE	1
5	MAS1008-04	8-32 X 1/4" PPH MS 5EMS ZINC	2
6	PGR0004-00	VUK PLUNGER	1
7	SPR0001-00	VUK SPRING	1
8	SWI0015-00	VUK SWITCH	1
9	TFS2102-08	2-56 X 1/2" HWH TFS 3/16" HEX HEAD - BLACK	2
10	MTL0048-01	SW PROTECTOR PLATE - NO TAP	1
11	RBR0011-00	RUFFER BUMPER PLUG	1
12	WAS4000-08A	1/2" ID COIL SPRING WASHER	1

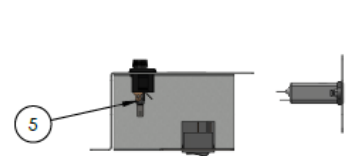
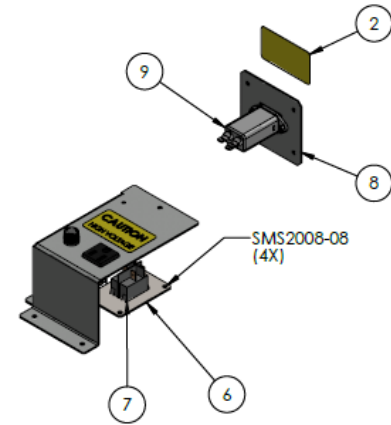
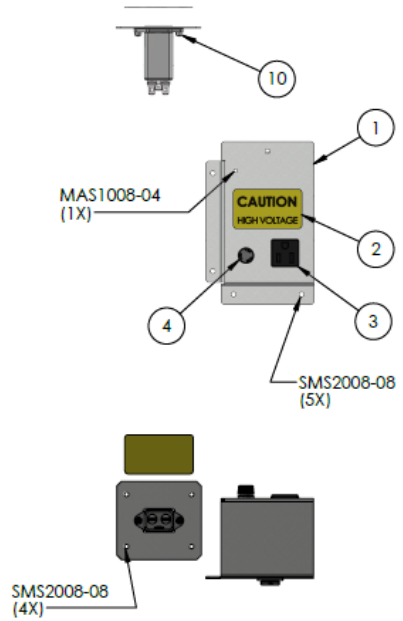
REV.	DESCRIPTION	DATE	APPROVED
A	REMOVED HOLE ON COIL COILS ADDED HOLES ON MOUNTING SCREWS REVISED DIMENSIONS OF PARTS CHANGED SHEET FROM B TO C	10/02/19	
B	WASHER REVISED TO INCL000-08A WASHERS TO BE CHANGED	3/05/2019	



	AMERICAN PINBALL 1408 Yorkville St. Birmingham, AL 35203 PHONE: (205) 944-1111 FAX: (205) 944-1112 WWW.AMERICANPINBALL.COM	DATE: 10/02/19 DWG. NO.: C ASM0018-01 REV: B
	SHEET: 1 OF 1 SCALE: 1:1	SHEET: 1 OF 1

Cabinet Power Box ASM0037-00

ITEM NO.	PART NUMBER	DESCRIPTION	QTY.
1	MTL0023-00B	CABINET POWER BOX	1
2	DCL0008-01C	CAUTION HIGH VOLTAGE	2
3	ELE0007-00	SERVICE OUTLET	1
4	ELE0008-00	LINE FUSE HOLDER	1
5	FUS0002-06	6 AMP SLO BLO 1/4" X 1/4" FUSE	1
6	MTL0026-00A	POWER SWITCH MOUNTING PLATE	1
7	SWI0014-00	ON/OFF ROCKER SWITCH	1
8	MTL0102-00	LINE FILTER MTG PLATE	1
9	ELE0006-00	LINE FILTER	1
10	NUT0004-00	4-40 NYLON LOCKNUT	2

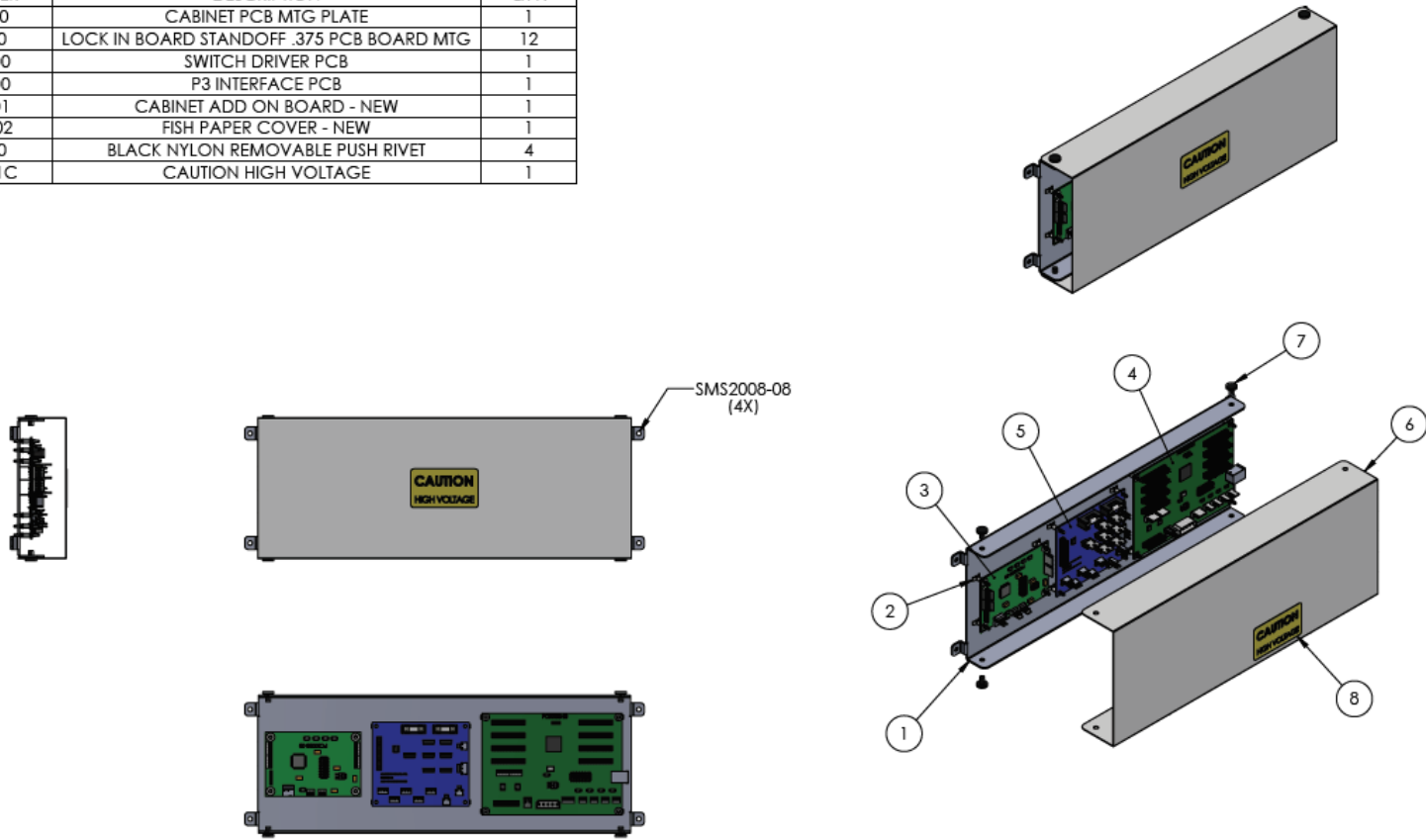


UNLESS OTHERWISE SPECIFIED: NO SHARP CORNERS AND EDGES; TOLERANCES (DIM. ARE IN INCHES): ANGULAR: MACH ± .5 DEG BEND ± 1 DEG FRACTIONAL: ± .002 3/16 ± .015 3/64 ± .010 3/32 ± .005 3/64 ± .0001 FINISH 125RMS DIN 9137 SCALE DRAWING		AMERICAN PINBALL 1448 Yorkshire Dr. Streamwood, IL 60107	
MATERIAL: AS PER BOM		DESCRIPTION: CABINET POWER BOX ASSEMBLY	
FINISH: NONE	SIZE B	DWG. NO. ASM0037-00	REV
DRAWN BY: RM		DRAWN DATE: 2/4/2019	SCALE: 1:4
		SHEET 1 OF 1	

PROPRIETARY AND CONFIDENTIAL: THE INFORMATION CONTAINED IN THIS DRAWING IS THE SOLE PROPERTY OF AMERICAN PINBALL. ANY REPRODUCTION IN PART OR AS A WHOLE WITHOUT THE WRITTEN PERMISSION OF AMERICAN PINBALL IS PROHIBITED.

Cabinet PCB ASM 0038-01

ITEM NO.	PART NUMBER	DESCRIPTION	QTY.
1	MTL0130-00	CABINET PCB MTG PLATE	1
2	PLS0023-00	LOCK IN BOARD STANDOFF .375 PCB BOARD MTG	12
3	PCB0003-00	SWITCH DRIVER PCB	1
4	PCB0002-00	P3 INTERFACE PCB	1
5	PCB0021-01	CABINET ADD ON BOARD - NEW	1
6	MSC0011-02	FISH PAPER COVER - NEW	1
7	PLS0073-00	BLACK NYLON REMOVABLE PUSH RIVET	4
8	DCL0008-01C	CAUTION HIGH VOLTAGE	1



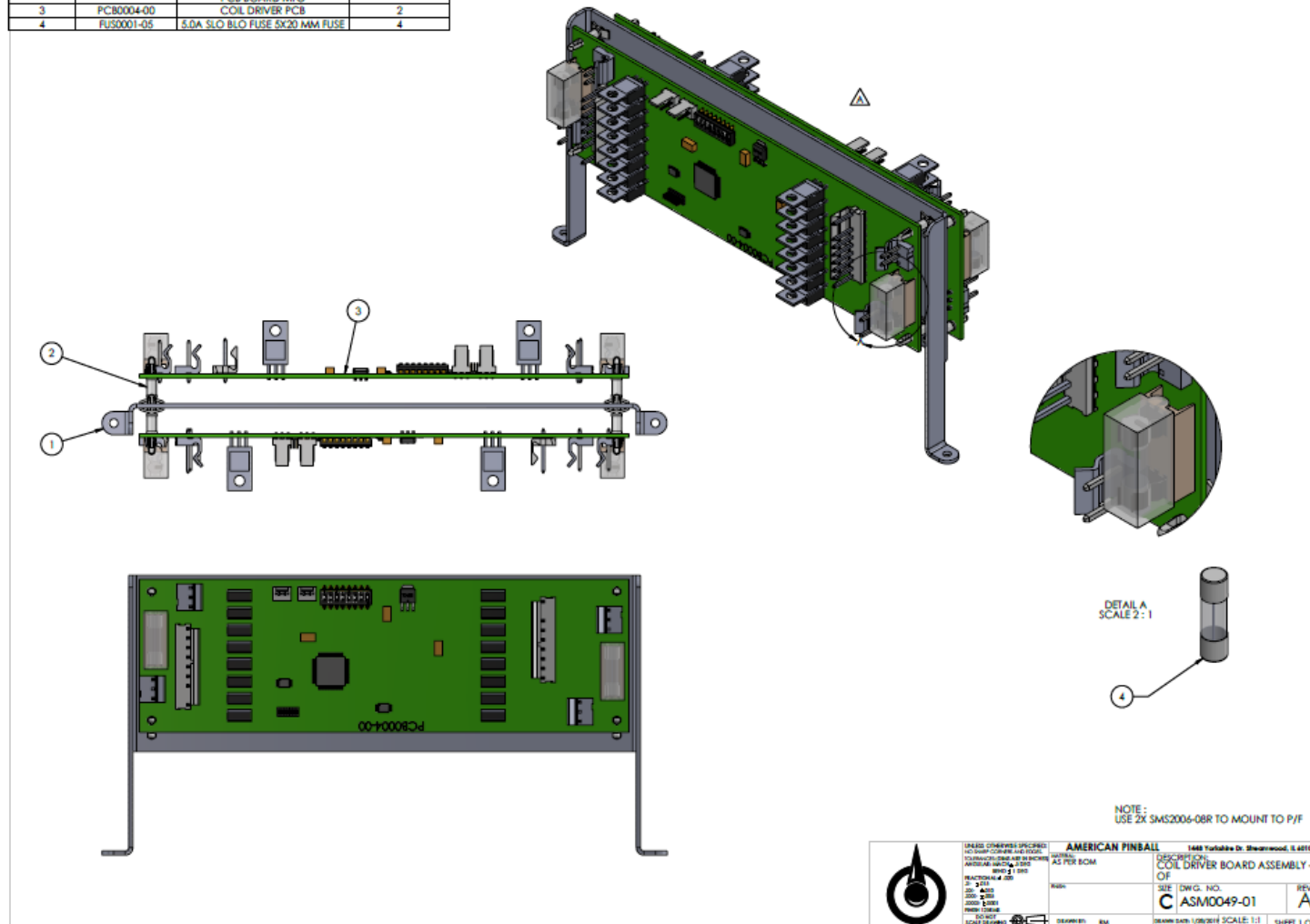
	UNLESS OTHERWISE SPECIFIED: NO SHARP CORNERS AND EDGES. TOLERANCES(DIMS ARE IN INCHES) ANGULAR: MINUS 5 DEG BEND ± 1 DEG FRACTIONAL: ± .020 .5: ±.015 .06: ±.010 .006: ±.005 .0005: ±.0001 FINISH 125RMS	AMERICAN PINBALL 1448 Yorkshire Dr. Streamwood, IL 60107	
	MATERIAL: AS PER BOM	DESCRIPTION: CABINET PCB ASSEMBLY	
	FINISH: NONE	SIZE DWG. NO. REV B ASM0038-01	DRAWN DATE: 2/11/2019 SCALE: 1:4 SHEET 1 OF 1
	DO NOT SCALE DRAWING	DRAWN BY: RM	

PROPRIETARY AND CONFIDENTIAL: THE INFORMATION CONTAINED IN THIS DRAWING IS THE SOLE PROPERTY OF AMERICAN PINBALL. ANY REPRODUCTION IN PART OR AS A WHOLE WITHOUT THE WRITTEN PERMISSION OF AMERICAN PINBALL IS PROHIBITED.

Coil Driver ASM0049-01

ITEM NO.	PART NUMBER	DESCRIPTION	QTY.
1	MTL0075-02A	COIL DRIVER PCB MOUNTING BRACKET	1
2	PLS0023-00	LOCK IN BOARD STANDOFF .375 PCB BOARD MTG	8
3	PCB0004-00	COIL DRIVER PCB	2
4	RUS0001-05	5.0A SLO BLO FUSE 5X20 MM FUSE	4

REVISIONS			
REV.	DESCRIPTION	DATE	APPROVED
A	FLIPPED ORIENTATION OF BOTH PCB	1/09/2019	



AMERICAN PINBALL 1488 Yorkville Dr. Bensenville, IL 60107

UNLESS OTHERWISE SPECIFIED:
 ALL DIMENSIONS ARE IN INCHES
 DIMENSIONS IN PARENTHESES ARE METRIC
 FINISHES ARE AS PER BOM
 TOLERANCES UNLESS OTHERWISE SPECIFIED:
 FRACTIONAL ±.010
 DECIMAL ±.005
 HOLE ±.005
 HOLE TO HOLE ±.005
 HOLE TO EDGE ±.005
 HOLE TO CENTER ±.005
 HOLE TO CENTER ±.005
 HOLE TO CENTER ±.005
 HOLE TO CENTER ±.005
 HOLE TO CENTER ±.005

DESCRIPTION: COIL DRIVER BOARD ASSEMBLY - OF

DATE: 1/09/2019

DWG. NO. ASM0049-01

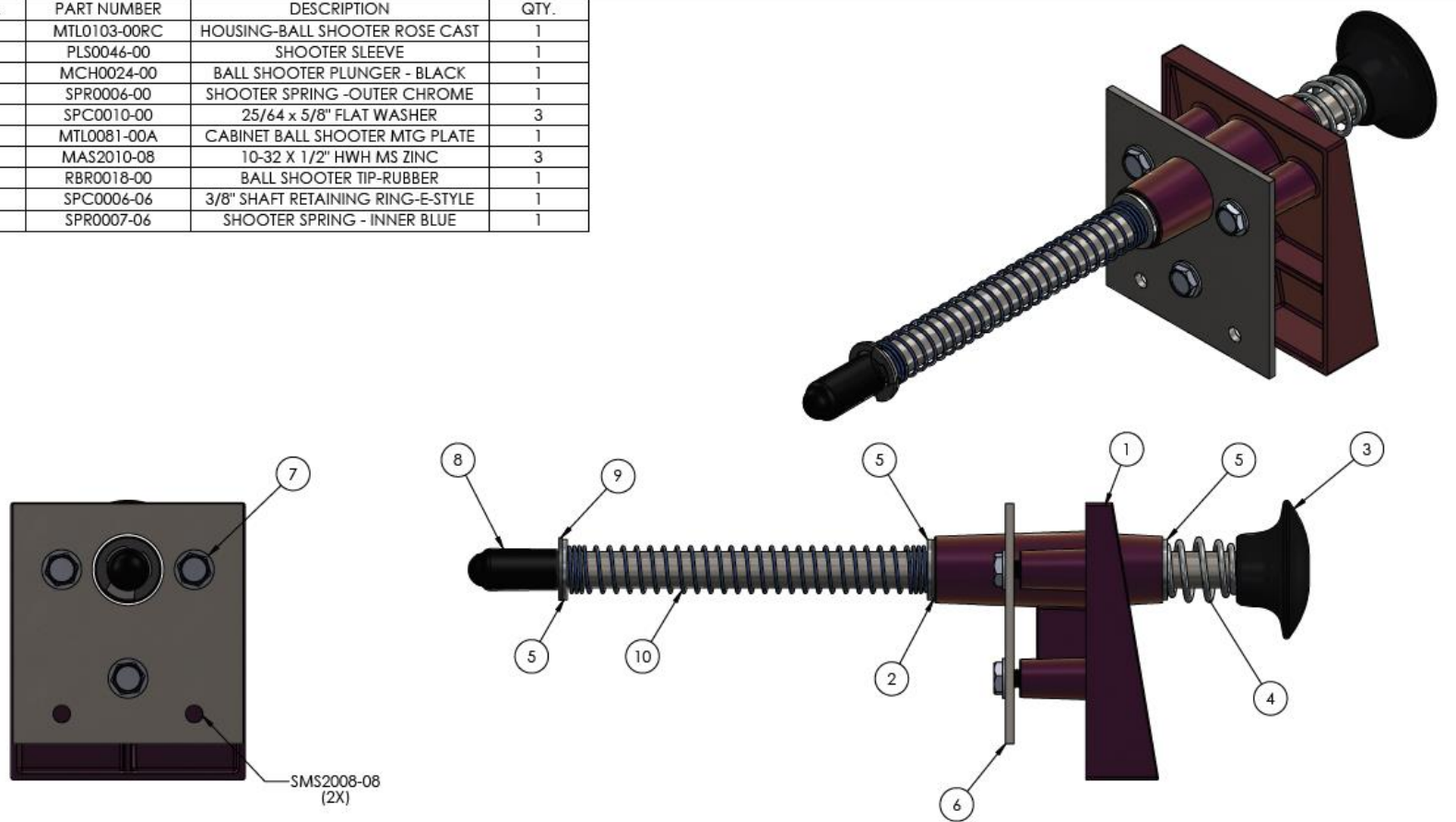
REV. A


SCALE: 1:1

SHEET 1 OF 2

Ball Shooter ASM0058-00RC

ITEM NO.	PART NUMBER	DESCRIPTION	QTY.
1	MTL0103-00RC	HOUSING-BALL SHOOTER ROSE CAST	1
2	PLS0046-00	SHOOTER SLEEVE	1
3	MCH0024-00	BALL SHOOTER PLUNGER - BLACK	1
4	SPR0006-00	SHOOTER SPRING - OUTER CHROME	1
5	SPC0010-00	25/64 x 5/8" FLAT WASHER	3
6	MTL0081-00A	CABINET BALL SHOOTER MTG PLATE	1
7	MAS2010-08	10-32 X 1/2" HWH MS ZINC	3
8	RBR0018-00	BALL SHOOTER TIP-RUBBER	1
9	SPC0006-06	3/8" SHAFT RETAINING RING-E-STYLE	1
10	SPR0007-06	SHOOTER SPRING - INNER BLUE	1

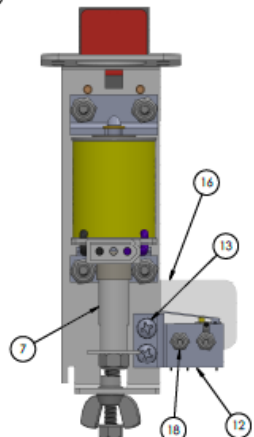
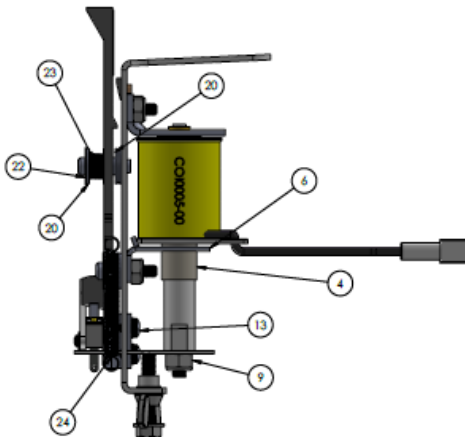
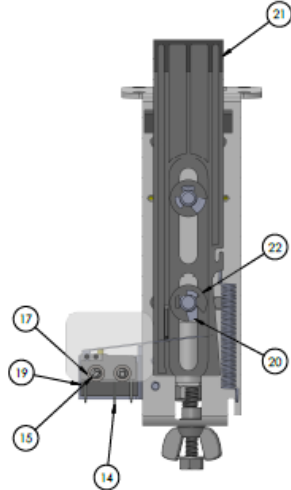
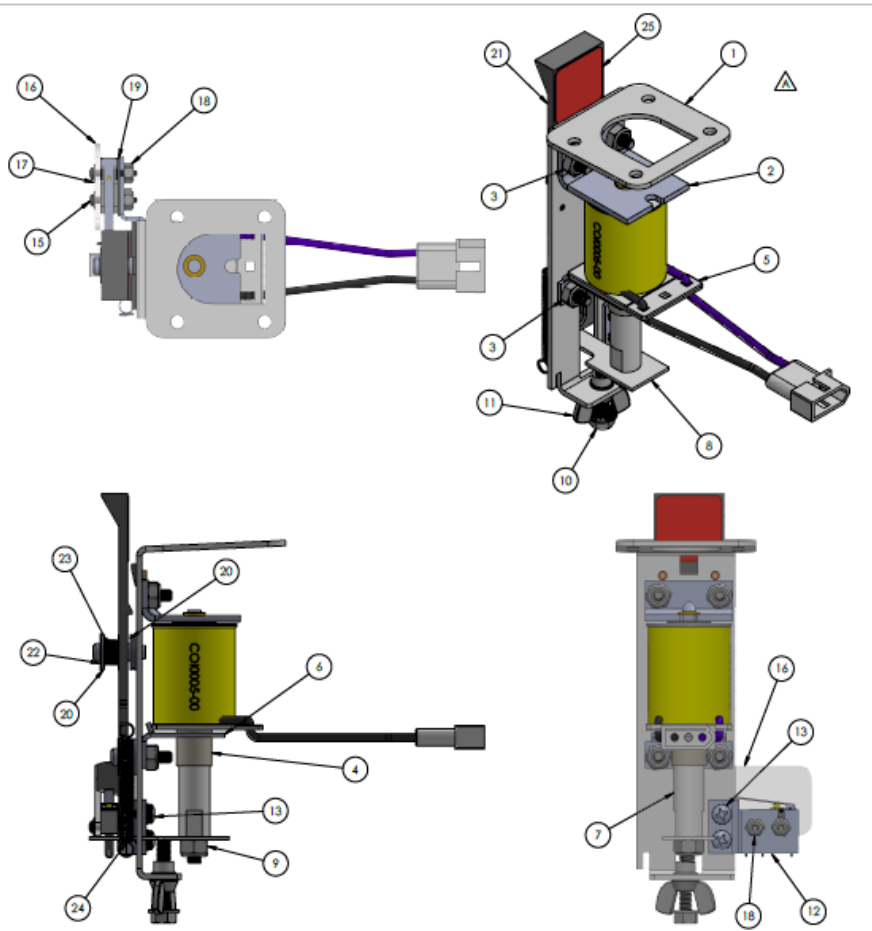


	UNLESS OTHERWISE SPECIFIED: NO SHARP CORNERS AND EDGES. TOLERANCES (DIM'S ARE IN INCHES) ANGULAR: MATCH ± 5 DEG BEND ± 1 DEG FRACTIONAL: ± .020 .10 ± .015 .30 ± .010 .500 ± .005 .0000 ± .0001 FINISH 125RMS	AMERICAN PINBALL MATERIAL: AS PER BOM	1448 Yorkshire Dr. Streamwood, IL 60107 DESCRIPTION: BALL SHOOTER ASSEMBLY - OKTOBERFEST - ROSE CAST P1111B
	DO NOT SCALE DRAWING	FINISH: DRAWN BY: RM	SIZE DWG. NO. REV B ASM0058-00RC

PROPRIETARY AND CONFIDENTIAL: THE INFORMATION CONTAINED IN THIS DRAWING IS THE SOLE PROPERTY OF AMERICAN PINBALL. ANY REPRODUCTION IN PART OR AS A WHOLE WITHOUT THE WRITTEN PERMISSION OF AMERICAN PINBALL IS PROHIBITED.

Drop Target ASM 0064-02A

ITEM NO.	PART NUMBER	DESCRIPTION	QTY.
1	SUB0009-00	BRACKET & POST ASSEMBLY	1
2	SUB0010-00	COIL STOP	1
3	NUT0008-00	8-32 NYLON LOCKNUT - LOW PROFILE	4
4	PLS0059-00	COIL SLEEVE 2-1/16" X 1/2" NO FLANGE	1
5	COI0005-00	24-1200 LUGLESS COIL	1
6	MIL0072-00	COIL CENTERING BRACKET	1
7	PGR0010-00	DROP TARGET PLUNGER	1
8	MIL0115-00	RESET PLATE SINGLE TARGET	1
9	NUT0010-00	10-32 NYLON LOCKNUT	1
10	MAS2010-16	10-32 X 1" HWH MS ZINC	1
11	NUT3010-00	10-32 WINGNUT	1
12	MIL0116-00	SWITCH BRACKET	1
13	MAS1006-03	6-32 X 3/16" PPH MS SEMS ZINC	2
14	SWI0020-00	MICRO SWITCH 2" BLADE	1
15	MAS0002-10	2-56 X 5/8" PPH MS EIMC	2
16	PLS0040-00	1 BANK D/T GUIDE ACTUATOR PLASTIC	1
17	WAS0002-00	#2-56 FLAT WASHER	2
18	NUT0002-00	2-56 NYLON LOCKNUT	2
19	MSC0003-00	SWITCH INSULATOR FISH PAPER	1
20	SPC0014-00	254 X .500 FLAT WASHER	4
21	PLS0058-00	TARGET - FLUSH	1
22	SPC0003-04	1/4" E-RING	2
23	SPR0009-00	1 BANK COMPRESSION SPRING	1
24	SPR0010-00	DROP TARGET EXTENSION SPRING	1
25	DCL0008-25C	D/T DECAL	1



NOTE:
USE 4X SMS2008-08 TO MOUNT TO P/F

REV.	DESCRIPTION	REVISIONS	DATE	APPROVED
A	ASSEMBLY REDRAWN TO SHOW ALL THE PARTS		1/30/2019	

UNLESS OTHERWISE SPECIFIED:
 NO SHARP CORNERS AND ROUNDS
 TO BE MAINTAINED UNLESS OTHERWISE
 INDICATED. ALL DIMENSIONS ARE IN INCHES
 UNLESS OTHERWISE SPECIFIED.
 FINISHES:
 ZN - ZINC
 PPH - PHOSPHOR BRONZE
 MS - MILD STEEL
 SS - STAINLESS STEEL
 SC - SOLDER
 SCALE: DRAWING: 1:1

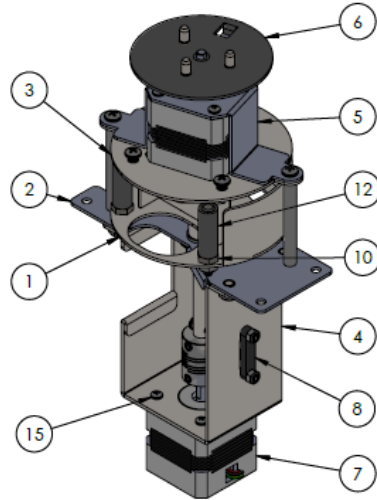
AMERICAN PINBALL 1488 Yorkshire Dr. Birmingham, AL 35207
 PHONE: 205-988-1111 FAX: 205-988-1112
 WWW.AMERICANPINBALL.COM
 AS PER BOM

DESCRIPTION:
 1 BANK DROP TARGET ASSEMBLY
 - NO TRIP COIL

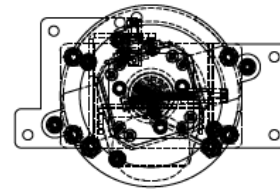
REV. A
 DWG. NO. C ASM0064-02
 DATE: 1/30/2019 SCALE: 1:1 SHEET 1 OF 1

Bartender ASM0065-00

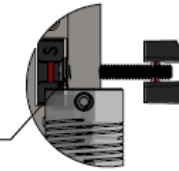
ITEM NO.	PART NUMBER	QTY	DESCRIPTION
1	MTL0146-00E	1	BAR DOOR
2	MTL0147-00B	1	BAR MECH PLAYFIELD MOUNT
3	MTL0148-00C	1	BARTENDER PLATE
4	MTL0149-00D	1	BAR MOTOR MOUNT
5	MTL0150-00A	1	BARTENDER MOTOR HAT BRACKET
6	MTL0153-00B	1	BARTENDER FIGURE PLATE
7	MTR0005-00	2	NEMA 17 BIPOLAR 45NCM (64 OZ.IN) STEPPER MOTOR
8	SWI0008-00	2	OPTEK U SHAPED OPTO OPB816Z
9	SWI0024-00	1	OPTEK U SHAPED OPTO OPB832W55Z
10	PST0005-00	2	3/8" PLAIN HEX SLEEVE POST 8-32 X 5/16" THREAD
11	NUT0008-00	6	8-32 NYLON LOCKNUT - LOW PROFILE
12	RBR0005-00	2	POST SLEEVE RUBBER - BLACK
13	NUT0004-00	4	4-40 NYLON LOCKNUT
14	MCH0038-00	1	5MM X 5 MM COUPLER
15	MAS30MM-6M	8	M3.0MM X 6MM PPH MS ZINC
16	MAS0004-04	2	4-40 X 1/4" PPH MS ZINC
17	MAS2008-06	2	8-32 X 3/8" HWH MS ZINC
18	MAS0008-06	6	8-32 X 3/8" PPH MS ZINC
19	MAS0006-16	1	6-32 X 1" PPH MS ZINC
20	RND0408-32	3	8/32 X 2 IN. ROUND THREADED STANDOFF



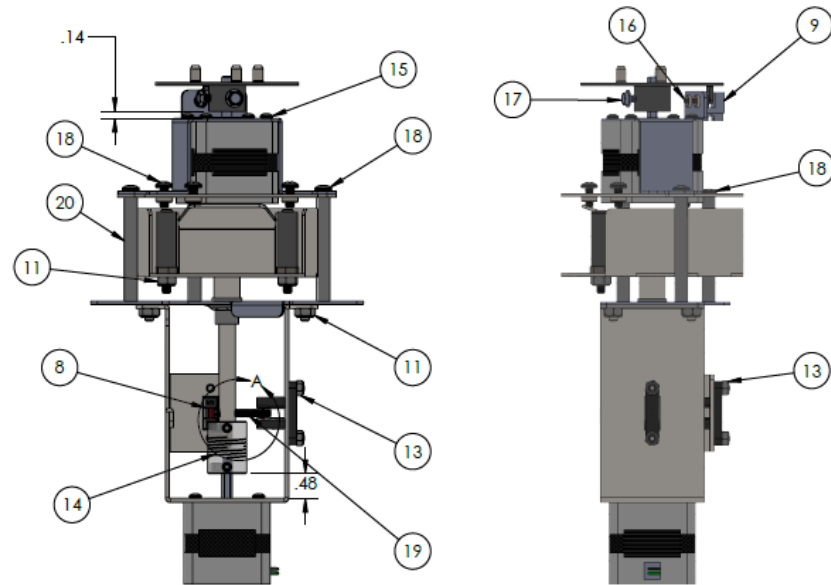
NOTE : APPLY LOCTITE ON ALL SCREWS EXCEPT MOTOR SCREWS BEFORE FASTENING



APPLY LOCTITE ON INTERNAL THREADS



DETAIL A
SCALE 1 : 1



UNLESS OTHERWISE SPECIFIED:
NO SHARP CORNERS AND EDGES.
TOLERANCES (DIMENSIONS ARE IN INCHES)
ANGULAR: MATCH ± 5 DEG
FRACTIONAL: ± .001
X: ± .015
X.06: ± .010
X.006: ± .005
X.0006: ± .0001
FINISH 125RMS
DO NOT SCALE DRAWING

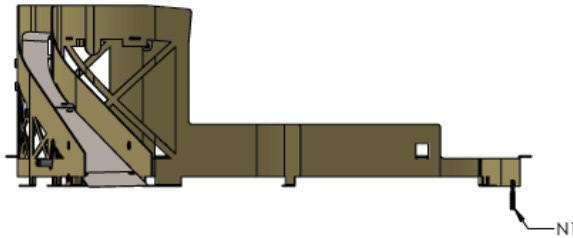
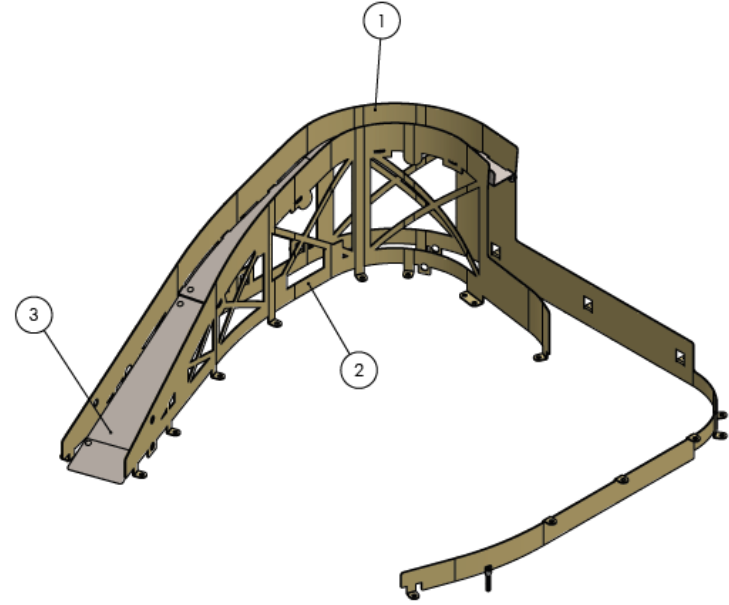
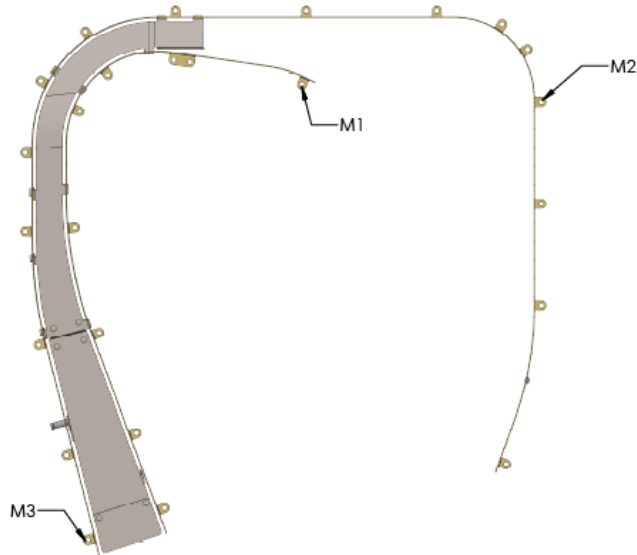
AMERICAN PINBALL		1448 Yorkshire Dr. Streamwood, IL 60107	
MATERIAL:		DESCRIPTION:	BARTENDER MECH
FINISH:		SIZE	DWG. NO.
		B	ASM0065-00
DRAWN BY: RM		DRAWN DATE: 3/15/2019	SCALE: 1:2
			REV
			SHEET 1 OF 1

PROPRIETARY AND CONFIDENTIAL: THE INFORMATION CONTAINED IN THIS DRAWING IS THE SOLE PROPERTY OF AMERICAN PINBALL. ANY REPRODUCTION IN PART OR AS A WHOLE WITHOUT THE WRITTEN PERMISSION OF AMERICAN PINBALL IS PROHIBITED.


Ramp ASM0074-00A

ITEM NO.	PART NUMBER	DESCRIPTION	QTY.
1	SUB0020-00B	UP RAMP OUTER FLAT RAIL ASSEMBLY	1
2	FLR0012-00	MAIN LOOP INNER FLAT RAIL	1
3	ASM0081-00A	UP RAMP FLOOR ASSEMBLY	1

REVISIONS			
REV.	DESCRIPTION	DATE	APPROVED
A	ASSEMBLY REDRAWN UP RAMP COIL ASSEMBLY REMOVED MOUNTING NOTES ADDED ADDED REVISED FLOOR ASSEMBLY	1/29/2019	



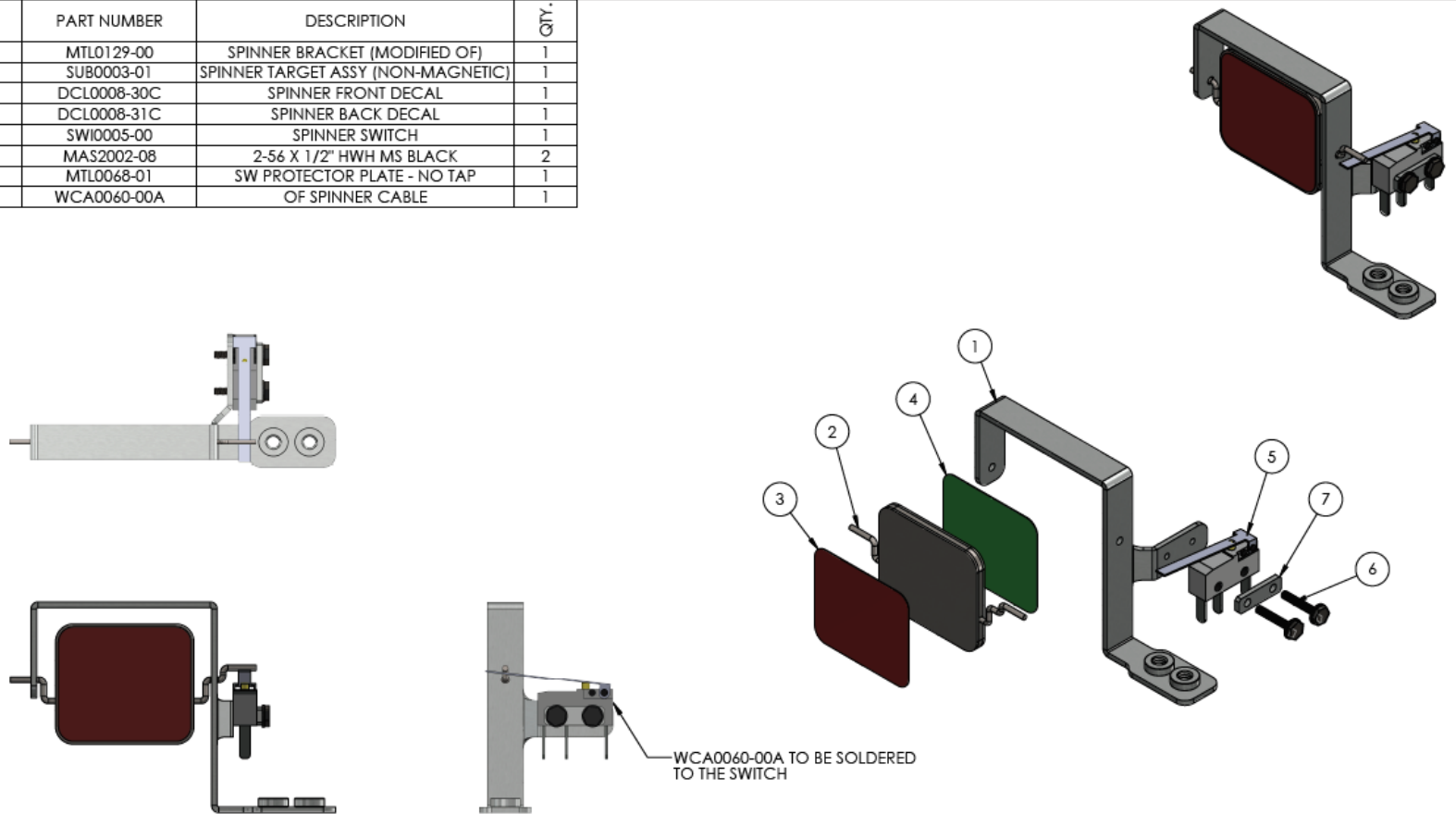
- NOTE (MOUNTING) :
1. LOCATION M1 (P/F) : 9X SMS2008-08
 2. LOCATION M2 (WOODRAILS) : 8X SMS7006-08
 3. LOCATION M3 (P/F) : 8X SMS2008-08
 4. LOCATION N1 (P/F) : NUT0008-00

	UNLESS OTHERWISE SPECIFIED: NO SHARP CORNERS AND EDGES. TOLERANCES(DIM IN INCHES) ANGULAR: MAX/CS: 5 DEG BEND ± 1 DEG FRACTIONAL: ± .020 .125: ± .015 .300: ± .010 .500: ± .005 1.000: ± .001 FINISH 125RMS DO NOT SCALE DRAWING	AMERICAN PINBALL MATERIAL: AS PER BOM FINISH: NONE	1448 Yorkshire Dr. Streamwood, IL 60107 DESCRIPTION: OF UP RAMP ASSEMBLY SIZE DWG. NO. REV B ASM0074-00 A
	DRAWN BY: RM DRAWN DATE: 1/29/2019 SCALE: 1:4 SHEET 1 OF 1		

PROPRIETARY AND CONFIDENTIAL: THE INFORMATION CONTAINED IN THIS DRAWING IS THE SOLE PROPERTY OF AMERICAN PINBALL. ANY REPRODUCTION IN PART OR AS A WHOLE WITHOUT THE WRITTEN PERMISSION OF AMERICAN PINBALL IS PROHIBITED.

Spinner ASM0076-00

ITEM NO.	PART NUMBER	DESCRIPTION	QTY.
1	MTL0129-00	SPINNER BRACKET (MODIFIED OF)	1
2	SUB0003-01	SPINNER TARGET ASSY (NON-MAGNETIC)	1
3	DCL0008-30C	SPINNER FRONT DECAL	1
4	DCL0008-31C	SPINNER BACK DECAL	1
5	SWI0005-00	SPINNER SWITCH	1
6	MAS2002-08	2-56 X 1/2" HWH MS BLACK	2
7	MTL0068-01	SW PROTECTOR PLATE - NO TAP	1
8	WCA0060-00A	OF SPINNER CABLE	1



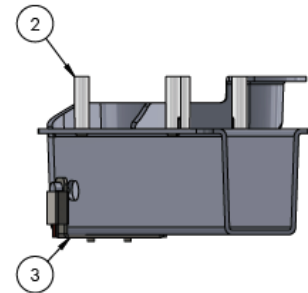
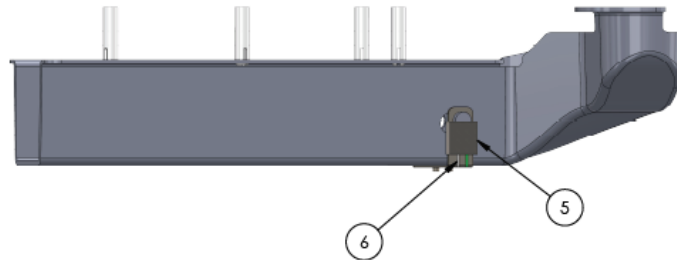
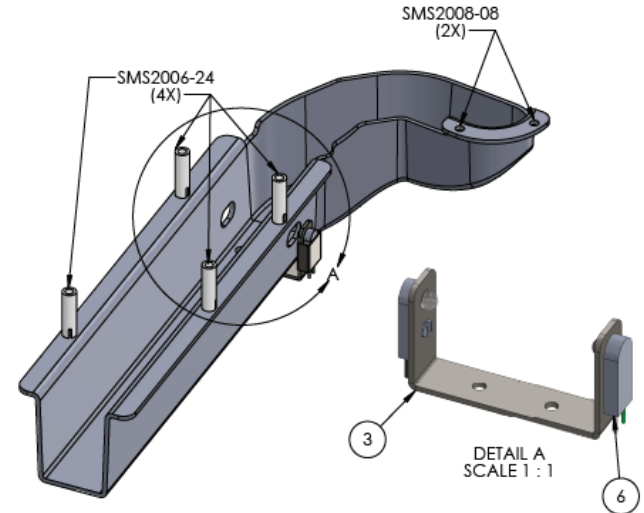
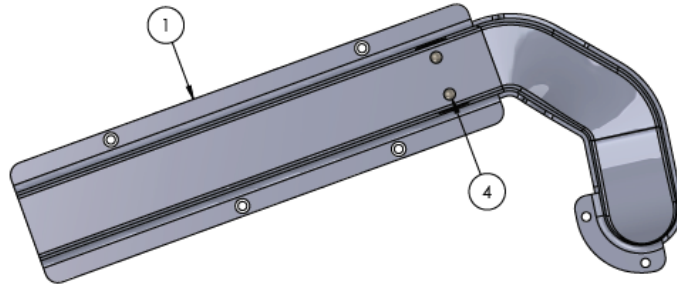
NOTES :
 1) USE MAS2008-12 (X2) FOR MOUNTING
 2) COLORS USED IN THIS ASSEMBLY DRAWING ARE FOR ILLUSTRATION PURPOSE ONLY.


	UNLESS OTHERWISE SPECIFIED: NO SHARP CORNERS AND EDGES. TOLERANCES-DIMS ARE IN INCHES ANGULAR: MAX±.5 DEG BEND ± 1 DEG FRACTIONAL±.020 .X. ±.015 .XX. ±.010 .XXX. ±.005 .XXXX. ±.0001 FINISH 125RMS DO NOT SCALE DRAWING	AMERICAN PINBALL MATERIAL: AS PER BOM FINISH:	1448 Yorkshire Dr. Streamwood, IL 60107 DESCRIPTION: OF MODIFIED SPINNER ASSEMBLY
	DRAWN BY: RM	SIZE DWG. NO. B ASM0076-00	REV

PROPRIETARY AND CONFIDENTIAL: THE INFORMATION CONTAINED IN THIS DRAWING IS THE SOLE PROPERTY OF AMERICAN PINBALL. ANY REPRODUCTION IN PART OR AS A WHOLE WITHOUT THE WRITTEN PERMISSION OF AMERICAN PINBALL IS PROHIBITED.

Subway ASM0077-00

ITEM NO.	PART NUMBER	DESCRIPTION	QTY.
1	PLS0070-00	OF UNDERTROUGH	1
2	PLS0020-00	NYLON PCB SUPPORTS #8 HRS8-16	4
3	MTL0033-00	RAMP OPTO BRACKET	1
4	SPC0005-02	1/8" X 7/32" LONG X 7/32" HEAD NICKEL RIVET	2
5	MTL0097-00	OPTO RETAINER	2
6	WCA0016-00A	OPTEK OPTO CABLE ASSEMBLY	1



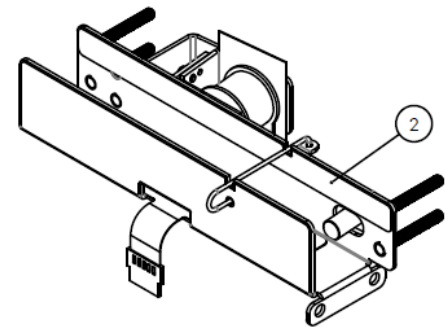
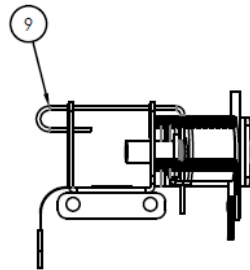
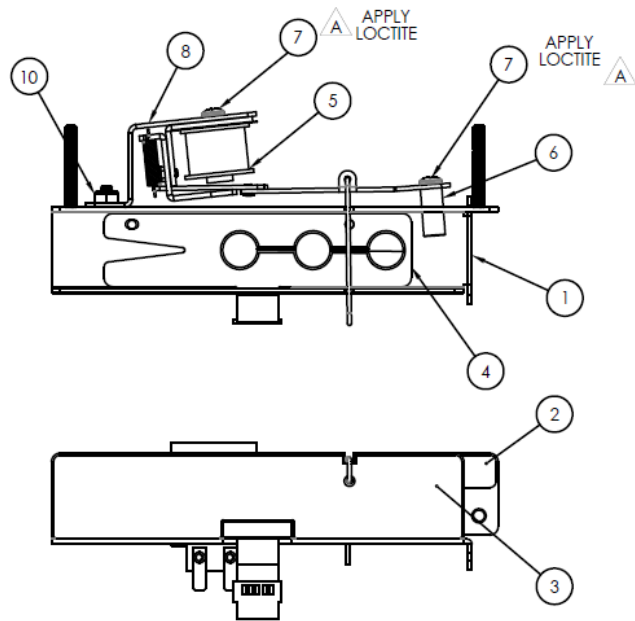
	UNLESS OTHERWISE SPECIFIED: NO SHARP CORNERS AND EDGES. TOLERANCES/STDS ARE IN INCHES) ANGULAR: MATCH 5 DEG BEND ± 1 DEG FRACTIONAL: ± .020 .6: ±.015 .306: ±.010 .3006: ±.005 .30006: ±.0001 FINISH 125RMS DO NOT SCALE DRAWING	AMERICAN PINBALL MATERIAL: AS PER BOM FINISH:	1448 Yorkshire Dr. Streamwood, IL 60107 DESCRIPTION: OF UNDERTROUGH ASSEMBLY
	DWG. NO. B ASM0077-00	REV	DRAWN BY: RM DRAWN DATE: 2/5/2019 SCALE: 1:2

PROPRIETARY AND CONFIDENTIAL: THE INFORMATION CONTAINED IN THIS DRAWING IS THE SOLE PROPERTY OF AMERICAN PINBALL. ANY REPRODUCTION IN PART OR AS A WHOLE WITHOUT THE WRITTEN PERMISSION OF AMERICAN PINBALL IS PROHIBITED.

Coaster Lock ASM0078-00A

ITEM NO.	PART NUMBER	DESCRIPTION	QTY.
1	MTL0140-00	LOCK MECH TROUGH - COASTER	1
2	DCL0008-44C	COASTER LOCK BACK WALL DECAL	1
3	DCL0008-45C	CORKSCREW SHACK DECAL	1
4	SWI0022-00A	3 - POSITION MEMBRANE SWITCH	1
5	SUB0016-00A	BALL LOCK COIL ASSEMBLY	1
6	MCH0037-00	LOCK MECH STOP PIN	1
7	MAS0008-06	8-32 X 3/8" PPH MS ZINC	2
8	MTL0136-00A	LOCK MECH COIL BRACKET	1
9	WRF0014-00	BALL LOCK WIRE FORM	1
10	NUT0008-00	8-32 NYLON LOCKNUT - LOW PROFILE	2

REVISIONS			
REV.	DESCRIPTION	DATE	APPROVED
A	REMOVED TO10015-00 ADDED DECALS CHANGED SPRING COLOR TO RED ADDED NOTE ON LOCTITE REMOVED EXPLODED VIEW	1/29/2019	



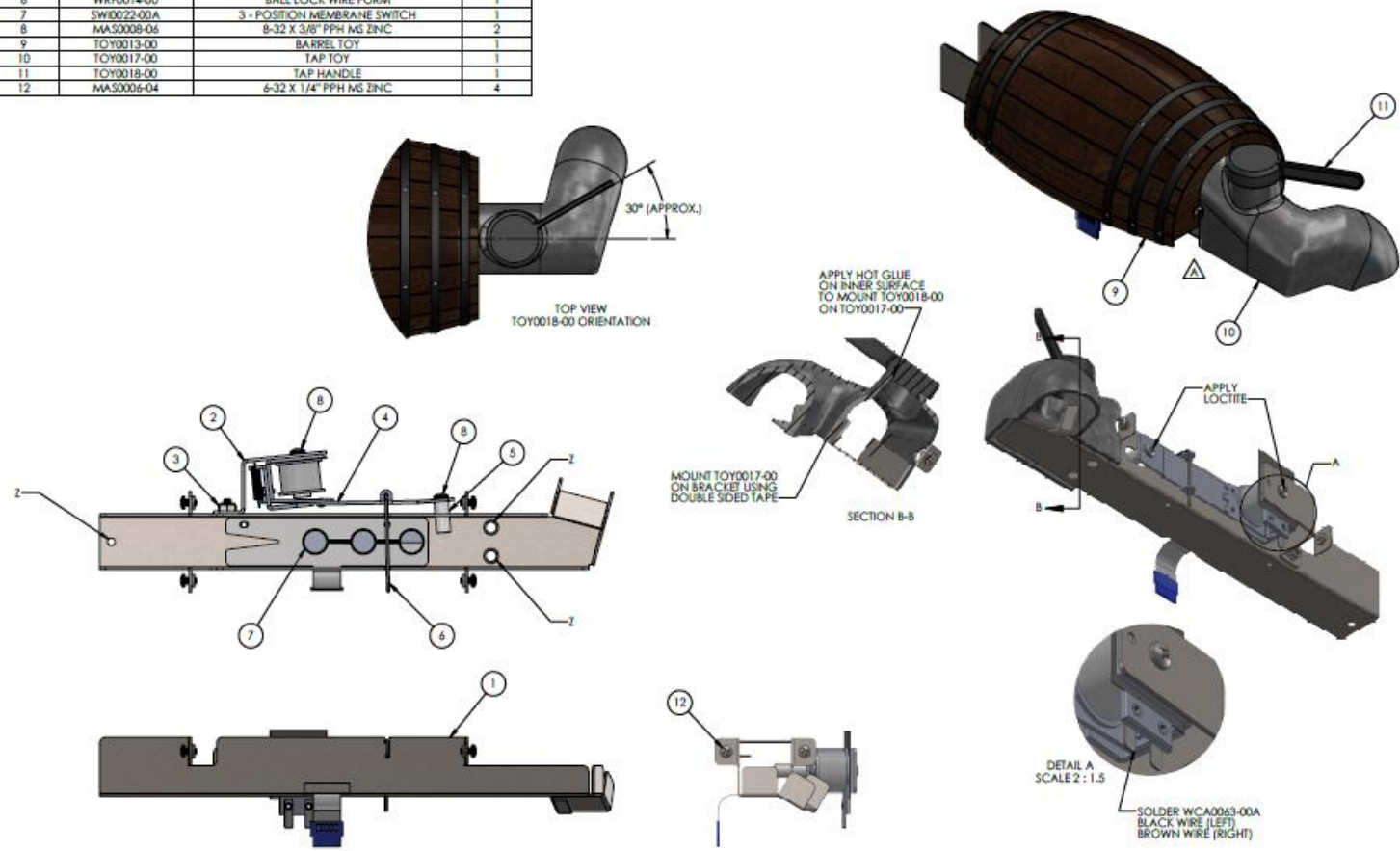
	UNLESS OTHERWISE SPECIFIED: NO SHARP CORNERS AND EDGES. TOLERANCES/DIMS ARE IN INCHES ANGULAR: MAX ± .5 DEG BEND ± 1 DEG FRACTIONAL: ± .002 .1" ± .015 .50" ± .010 .750" ± .005 1.000" ± .001 FINISH 125RMS		AMERICAN PINBALL 1448 Yorkshire Dr. Streamwood, IL 60107		
	MATERIAL: AS PER BOM		DESCRIPTION: LOCK MECH TROUGH - COASTER ASSEMBLY		
	FINISH: NONE		SIZE B	DWG. NO. ASM0078-00A	REV A
	DO NOT SCALE DRAWING		DRAWN BY: RM	DRAWN DATE: 1/29/2019	SCALE: 1:1.5

PROPRIETARY AND CONFIDENTIAL: THE INFORMATION CONTAINED IN THIS DRAWING IS THE SOLE PROPERTY OF AMERICAN PINBALL. ANY REPRODUCTION IN PART OR AS A WHOLE WITHOUT THE WRITTEN PERMISSION OF AMERICAN PINBALL IS PROHIBITED.

Beer Barrel Lock ASM0079-00A

ITEM NO.	PART NUMBER	DESCRIPTION	QTY.
1	MIL0140-01C	LOCK MECH TROUGH BRACKET - BARREL	1
2	MIL0136-00A	LOCK MECH COIL BRACKET	1
3	NUT0008-00	B-32 NYLON LOCKNUT - LOW PROFILE	2
4	SUB0016-00A	BALL LOCK COIL ASSEMBLY	1
5	MC+0037-00	LOCK MECH STOP PIN	1
6	WRP0014-00	BALL LOCK WIRE FORM	1
7	SW0022-00A	3 - POSITION MEMBRANE SWITCH	1
8	MA50008-06	B-32 X 3/8" PPH MG ZINC	2
9	TOY0013-00	BARREL TOY	1
10	TOY0017-00	TAP TOY	1
11	TOY0018-00	TAP HANDLE	1
12	MA50006-04	6-32 X 1/4" PPH MG ZINC	4

REVISIONS			
REV	DESCRIPTION	DATE	APPROVED
A	ADDED TOY TO THE ASSEMBLY ADDED NOTES FOR MOUNTING ADDED NOTE FOR USING LOCITE	1/28/2019	



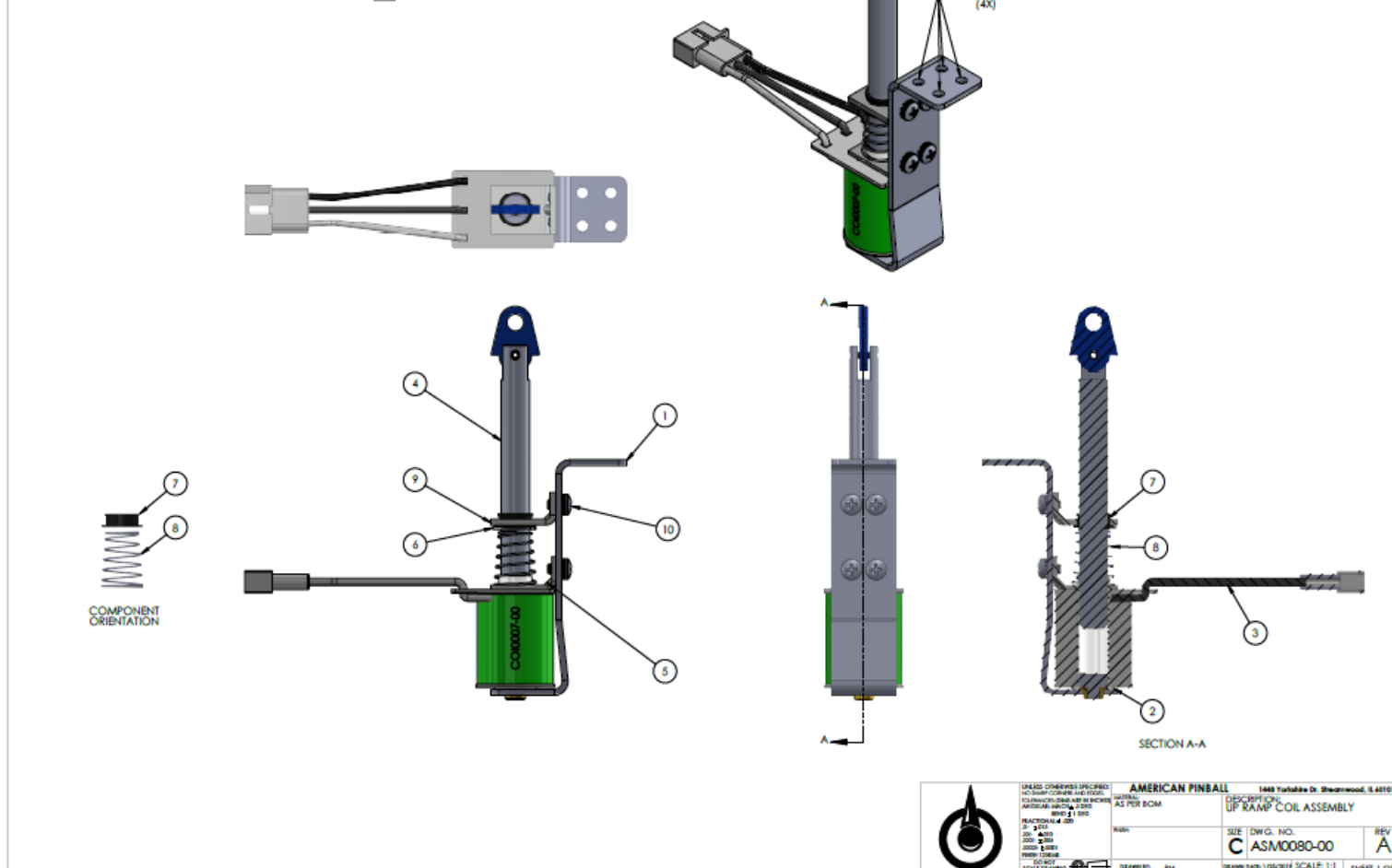
NOTES:
 1. USE 3X MA50008-06U ON MOUNTING LOCATION "Z"
 2. MOUNT TOY0017-00 AND TOY0018-00 AFTER MOUNTING THE ASSEMBLY ON THE PLAYFIELD.

	(UNLESS OTHERWISE SPECIFIED) ALL DIMENSIONS ARE IN INCHES DIMENSIONS IN PARENTHESIS ARE DECIMAL EQUIVALENTS TO THE DIMENSIONS LISTED IN INCHES FINISH: B-1, B-2, B-3, B-4, B-5, B-6, B-7, B-8, B-9, B-10, B-11, B-12, B-13, B-14, B-15, B-16, B-17, B-18, B-19, B-20, B-21, B-22, B-23, B-24, B-25, B-26, B-27, B-28, B-29, B-30, B-31, B-32, B-33, B-34, B-35, B-36, B-37, B-38, B-39, B-40, B-41, B-42, B-43, B-44, B-45, B-46, B-47, B-48, B-49, B-50, B-51, B-52, B-53, B-54, B-55, B-56, B-57, B-58, B-59, B-60, B-61, B-62, B-63, B-64, B-65, B-66, B-67, B-68, B-69, B-70, B-71, B-72, B-73, B-74, B-75, B-76, B-77, B-78, B-79, B-80, B-81, B-82, B-83, B-84, B-85, B-86, B-87, B-88, B-89, B-90, B-91, B-92, B-93, B-94, B-95, B-96, B-97, B-98, B-99, B-100	AMERICAN PINBALL 1488 Yorkshire Dr. Sheboygan, WI 53081 PHONE: 920.451.1111 FAX: 920.451.1112 WWW.AMERICANPINBALL.COM	DESCRIPTION: LOCK MECH TROUGH - BARREL ASSEMBLY SIZE: DWG. NO. C ASM0079-00 DRAWN DATE: 1/28/2019 SCALE: 1:1.5 SHEET 1 OF 1
	REACTORVILLE, INC. 1000 E. 10TH ST. SUITE 100 WISCONSIN, WI 53090 PHONE: 920.451.1111 FAX: 920.451.1112 WWW.REACTORVILLE.COM	DRAWN BY: BJA CHECKED BY: BJA APPROVED BY: BJA	REV: A

Up Ramp Coil ASM0080-00A

ITEM NO.	PART NUMBER	DESCRIPTION	QTY.
1	SUB0021-00B	UP RAMP COIL MFG BRACKET	1
2	PLS0035-00	COIL SLEEVE 1-3/4" X 1/2" NO FLANGE	1
3	CO0007-00	26-600/33-3500 LUGLESS UP/DOWN COIL	1
4	SUB0022-00A	UP RAMP FLUNGER AND LINK ASSEMBLY	1
5	MTL0082-00	8-32 TAPPED STANDARD COIL MOUNTING BRACKET	1
6	SFC0003-07	7/16" E-RINGS	1
7	PLS0028-00	NYLINER 7/16"	1
8	SPR0012-00	UP RAMP COIL SPRING	1
9	MTL0082-01	8-32 TAPPED HEAVY DUTY COIL MOUNTING BRACKET	1
10	MAS1008-04	8-32 X 1/4" PPH MS SEMS ZINC	4

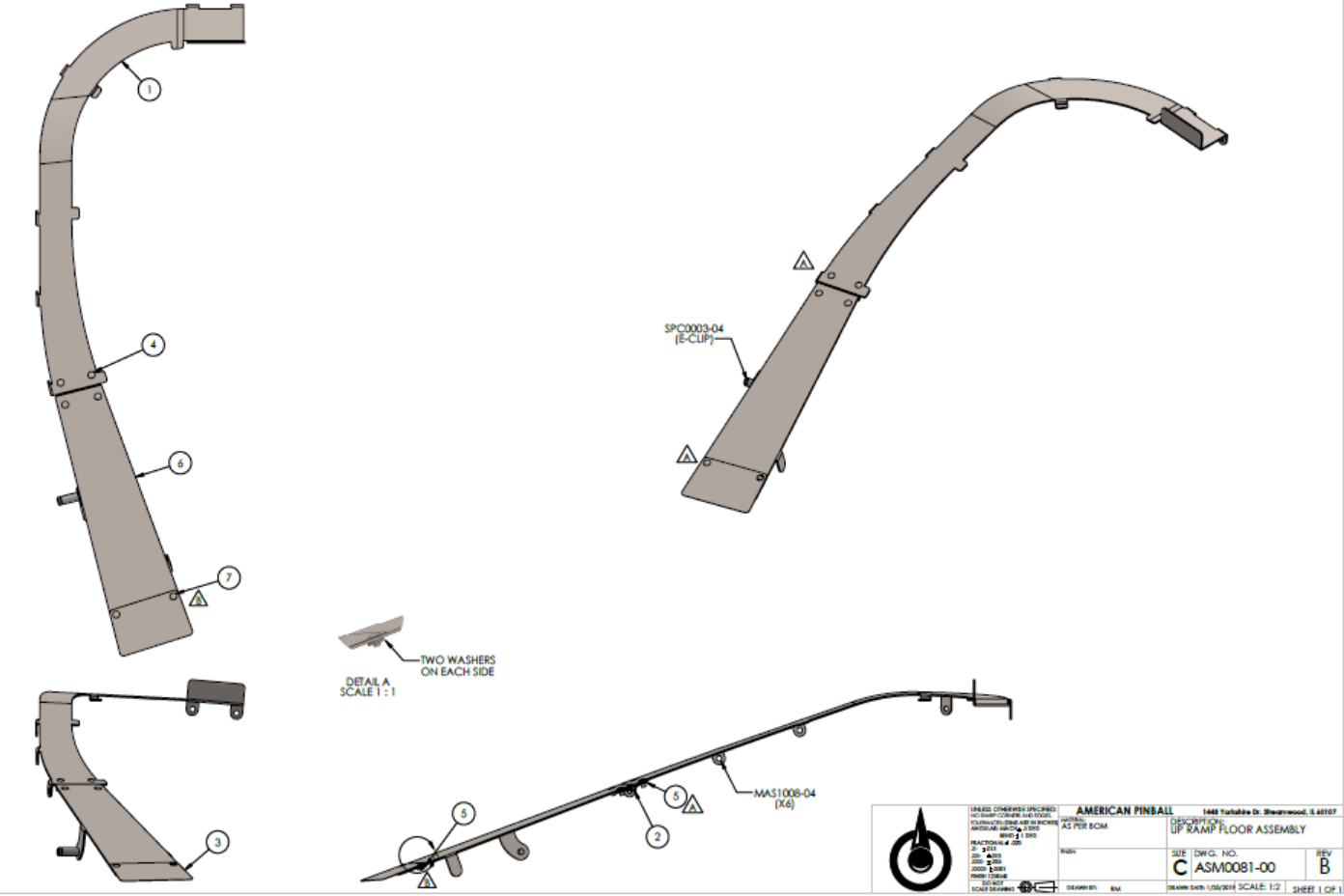
REVISIONS			
REV.	DESCRIPTION	DATE	APPROVED
A	CHANGED MAS2008-04 TO MAS1008-04	1/25/2019	



Ramp Floor ASM0081-00B

REVISIONS			
REV.	DESCRIPTION	DATE	APPROVED
A	CHANGED HINETS ADDED WASHERS	1/25/2019	
B	NEED 4 WASHERS INSTEAD OF 2 FOR THE LAMP FLAP ADDED DETAIL VIEW	3/19/2019	

ITEM NO.	PART NUMBER	DESCRIPTION	QTY.
1	MFL0141-00A	UP RAMP METAL FLOOR TOP	1
2	PUR0008-00	UP RAMP HINGE	1
3	MFL0143-00A	UP RAMP FLAP	1
4	SPC0005-02	1/8" X 7/32" LONG X 7/32" HEAD NICKEL RIVET	4
5	WAS0004-00	#4 FLAT WASHER	8
6	SUB0023-00A	UP RAMP METAL FLOOR BOTTOM SUB ASSY	1
7	SPC0005-00	1/8" X 3/16" LONG X 7/32" HEAD NICKEL RIVET	2

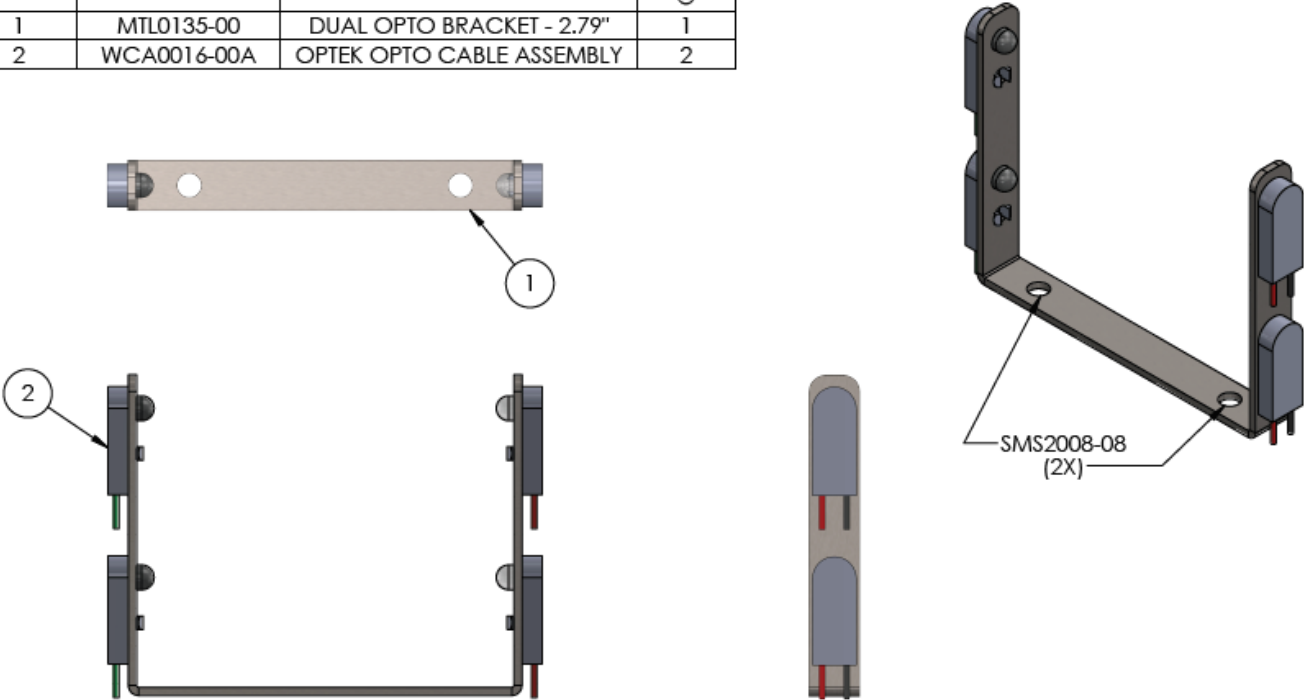



Technical drawing of Ramp Floor ASM0081-00B. The drawing includes an exploded view on the left and an assembled view on the right. Callouts 1 through 7 identify various components. A detail view A shows a close-up of a hinge area with the note 'TWO WASHERS ON EACH SIDE' and 'SCALE 1:1'. A note 'SPC0003-04 (E-CLIP)' points to a specific feature. Another note 'MAS1008-04 (X6)' points to a component in the assembled view. The drawing is titled 'UP RAMP FLOOR ASSEMBLY' and includes a title block with the following information:

AMERICAN PINBALL 1448 Yorkville Dr. Bensenville, IL 60107
 DESCRIPTION: UP RAMP FLOOR ASSEMBLY
 DWG. NO. C ASM0081-00
 REV B
 DATE: 1/25/2019
 SCALE: 1:2
 SHEET 1 OF 1

Dual Opto ASM0082-00

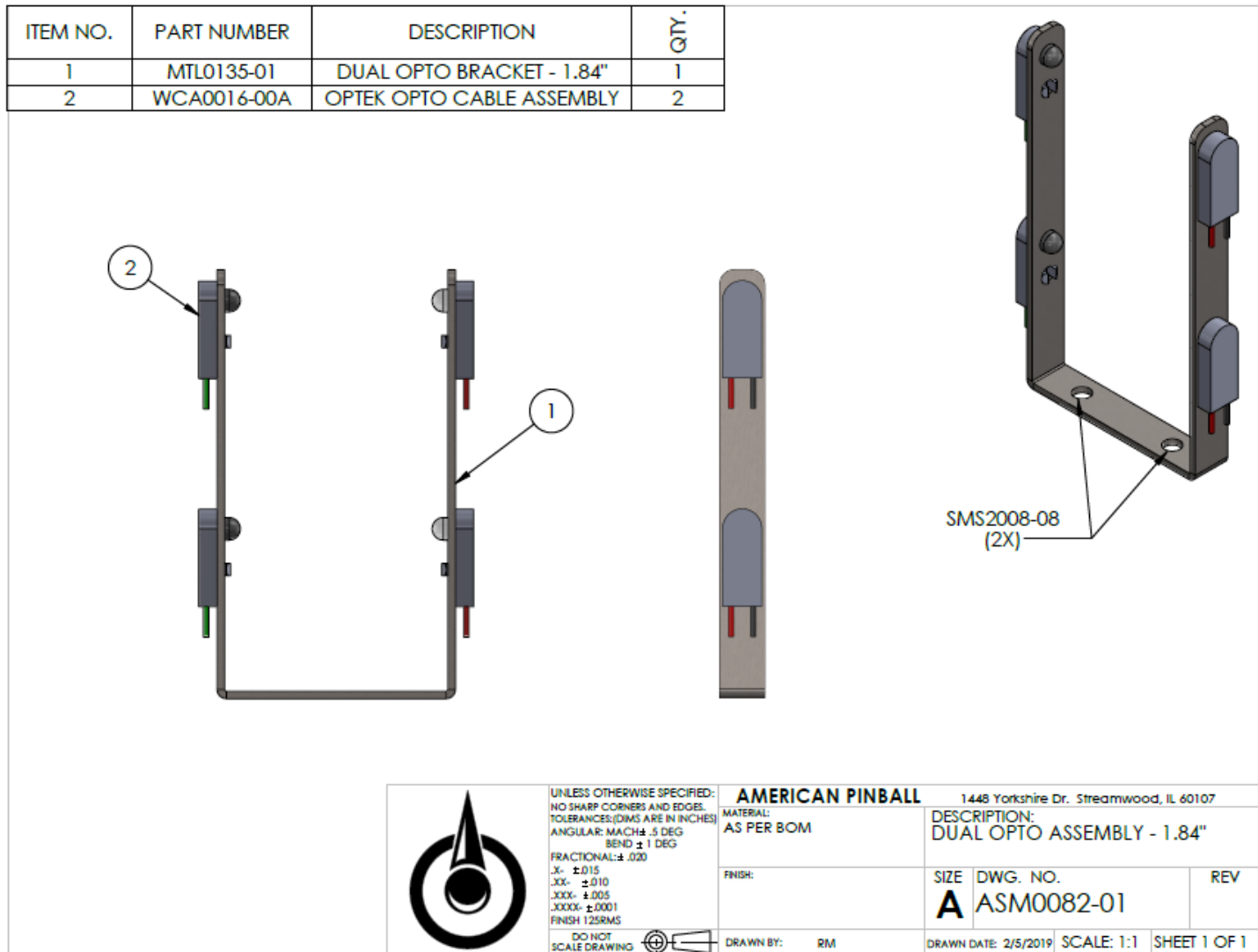
ITEM NO.	PART NUMBER	DESCRIPTION	QTY.
1	MTL0135-00	DUAL OPTO BRACKET - 2.79"	1
2	WCA0016-00A	OPTEK OPTO CABLE ASSEMBLY	2



	UNLESS OTHERWISE SPECIFIED: NO SHARP CORNERS AND EDGES. TOLERANCES:(DIM'S ARE IN INCHES) ANGULAR: MACH± .5 DEG BEND ± 1 DEG FRACTIONAL:± .020 .X- ±.015 .XX- ±.010 .XXX- ±.005 .XXXX- ±.0001 FINISH 125RMS		AMERICAN PINBALL 1448 Yorkshire Dr. Streamwood, IL 60107	
	MATERIAL: AS PER BOM		DESCRIPTION: DUAL OPTO ASSEMBLY - 2.79"	
FINISH:		SIZE A	DWG. NO. ASM0082-00	REV
DO NOT SCALE DRAWING		DRAWN BY: RM	DRAWN DATE: 2/5/2019	SCALE: 1:1 SHEET 1 OF 1

PROPRIETARY AND CONFIDENTIAL: THE INFORMATION CONTAINED IN THIS DRAWING IS THE SOLE PROPERTY OF AMERICAN PINBALL. ANY REPRODUCTION IN PART OR AS A WHOLE WITHOUT THE WRITTEN PERMISSION OF AMERICAN PINBALL IS PROHIBITED.

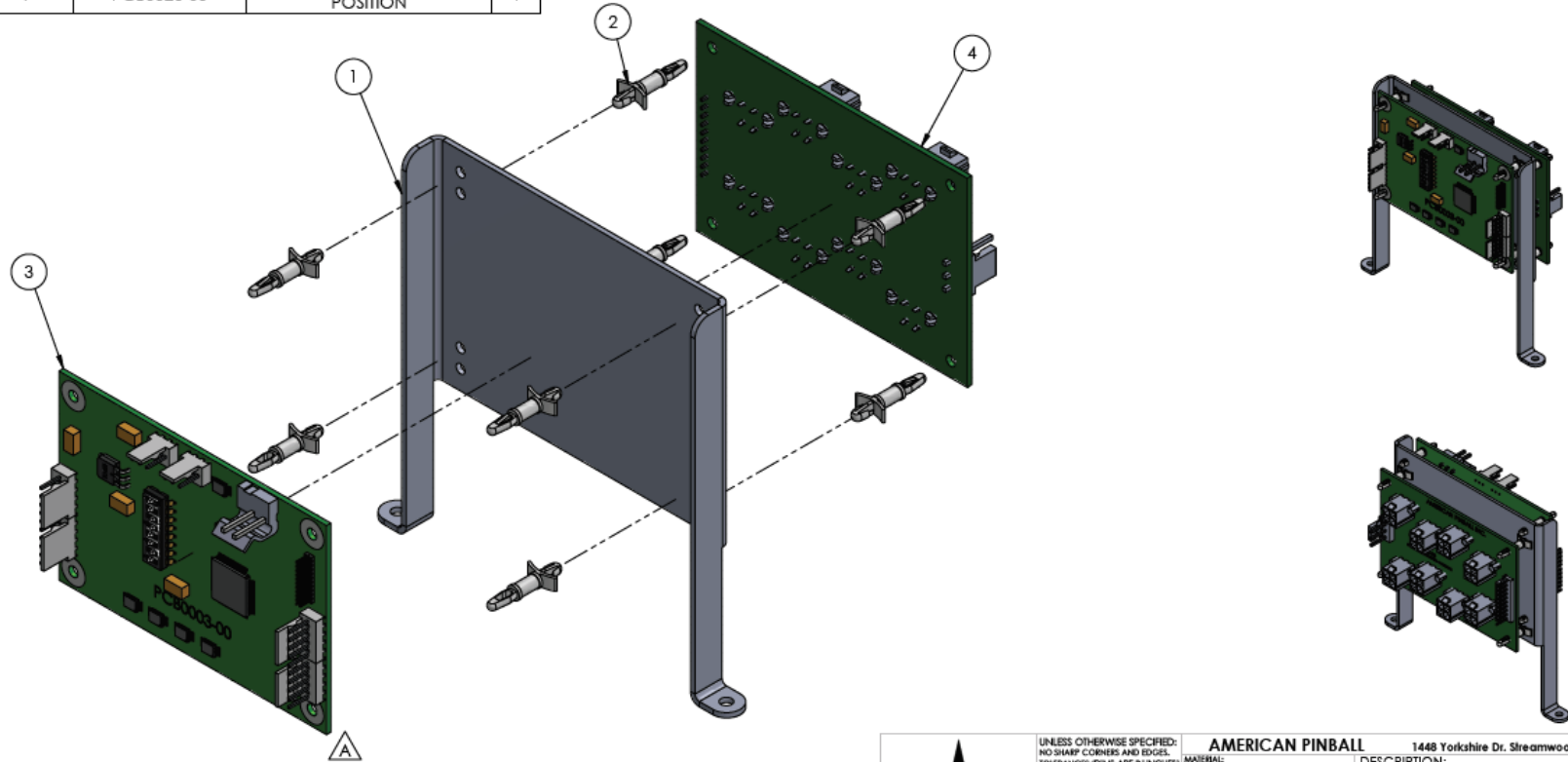
Dual Opto Narrow ASM0082-01



Switch / Opto Board ASM0092-00A

ITEM NO.	PART NUMBER	DESCRIPTION	QTY.
1	MTL0075-00A	SWITCH DRIVER PCB MOUNTING BRACKET	1
2	PLS0023-00	LOCK IN BOARD STANDOFF .375 PCB BOARD MTG	8
3	PCB0003-00	SWITCH DRIVER PCB	1
4	PCB0026-00	OPTO INTERFACE BOARD - 8 POSITION	1

REVISIONS			
REV.	DESCRIPTION	DATE	APPROVED
A	FLIPPED ORIENTATION OF PCB0003-00 CHANGED SHEET SIZE FROM A TO B	1/25/2019	



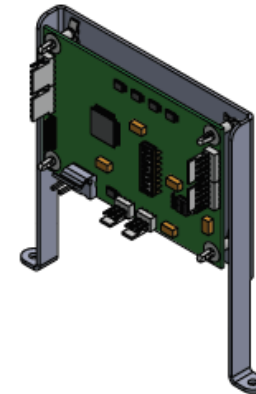
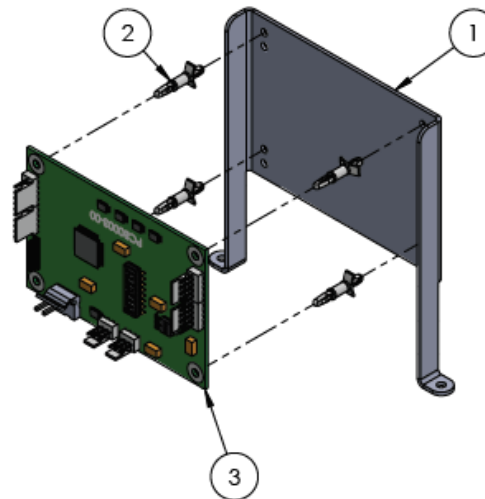
NOTE :
USE SMS2006-08R (X2)
FOR MOUNTING TO P/F

	UNLESS OTHERWISE SPECIFIED: NO SHARP CORNERS AND EDGES. TOLERANCES: DIMS ARE IN INCHES ANGULAR: MAX CHG. 5 DEG BEND ±1 DEG FRACTIONAL: ±.020 .X: ±.015 .XX: ±.010 .XXX: ±.005 .XXXX: ±.0001 FINISH 125RMS	AMERICAN PINBALL 1448 Yorkshire Dr. Streamwood, IL 60107	
	MATERIAL: AS PER BOM	DESCRIPTION: SWITCH/8 POSITION OPTO BOARD ASSEMBLY	FINISH:
DO NOT SCALE DRAWING	DRAWN BY: RM	DRAWN DATE: 1/25/2019	SCALE: 1:2 SHEET 1 OF 1


PROPRIETARY AND CONFIDENTIAL: THE INFORMATION CONTAINED IN THIS DRAWING IS THE SOLE PROPERTY OF AMERICAN PINBALL. ANY REPRODUCTION IN PART OR AS A WHOLE WITHOUT THE WRITTEN PERMISSION OF AMERICAN PINBALL IS PROHIBITED.

Single Switch Board ASM0095-00

ITEM NO.	PART NUMBER	DESCRIPTION	QTY.
1	MTL0075-00A	SWITCH DRIVER PCB MOUNTING BRACKET	1
2	PLS0023-00	LOCK IN BOARD STANDOFF .375 PCB BOARD MTG	4
3	PCB0003-00	SWITCH DRIVER PCB	1



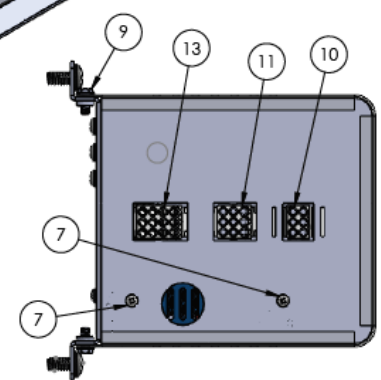
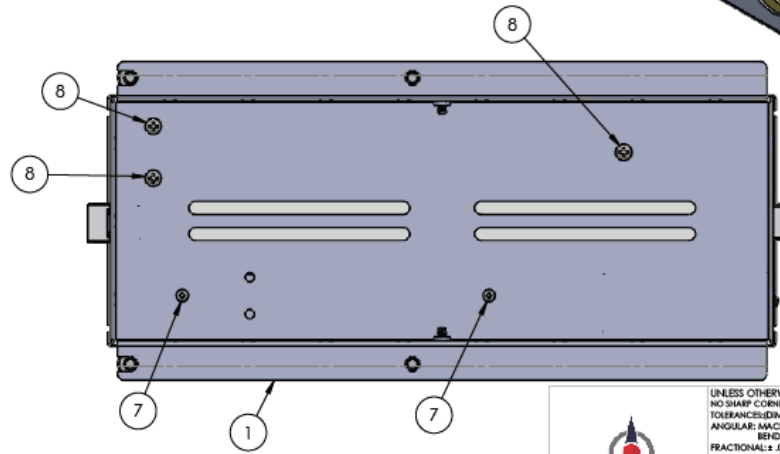
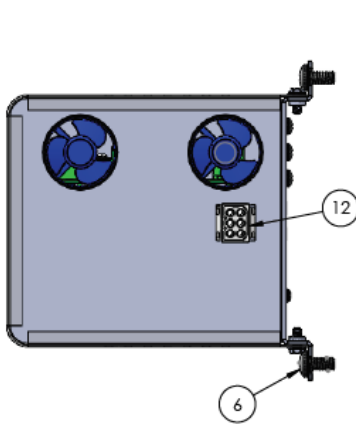
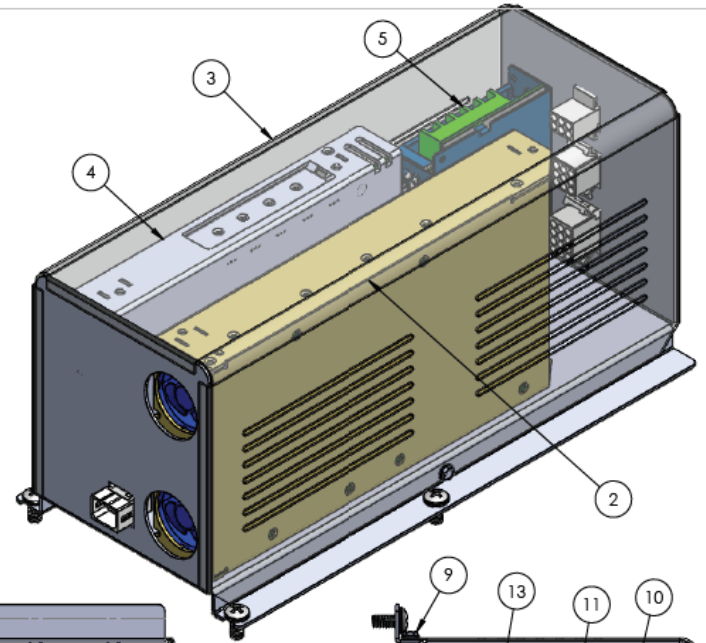
NOTES :
USE SMS2006-08R (X2) FOR MOUNTING


	UNLESS OTHERWISE SPECIFIED: NO SHARP CORNERS AND EDGES. TOLERANCES:(DIM'S ARE IN INCHES) ANGULAR: MACH±.5 DEG BEND ± 1 DEG FRACTIONAL:±.020 .X- ±.015 .XX- ±.010 .XXX- ±.005 .XXXX- ±.0001 FINISH 125RMS	AMERICAN PINBALL MATERIAL: AS PER BOM FINISH:	1448 Yorkshire Dr. Streamwood, IL 60107 DESCRIPTION: SINGLE SWITCH BOARD ASSEMBLY SIZE DWG. NO. A ASM0095-00 REV
	DO NOT SCALE DRAWING	DRAWN BY: RM	DRAWN DATE:12/27/2018 SCALE: 1:2 SHEET 1 OF 1

PROPRIETARY AND CONFIDENTIAL: THE INFORMATION CONTAINED IN THIS DRAWING IS THE SOLE PROPERTY OF AMERICAN PINBALL. ANY REPRODUCTION IN PART OR AS A WHOLE WITHOUT THE WRITTEN PERMISSION OF AMERICAN PINBALL IS PROHIBITED.

Power Supply ASM0096-00

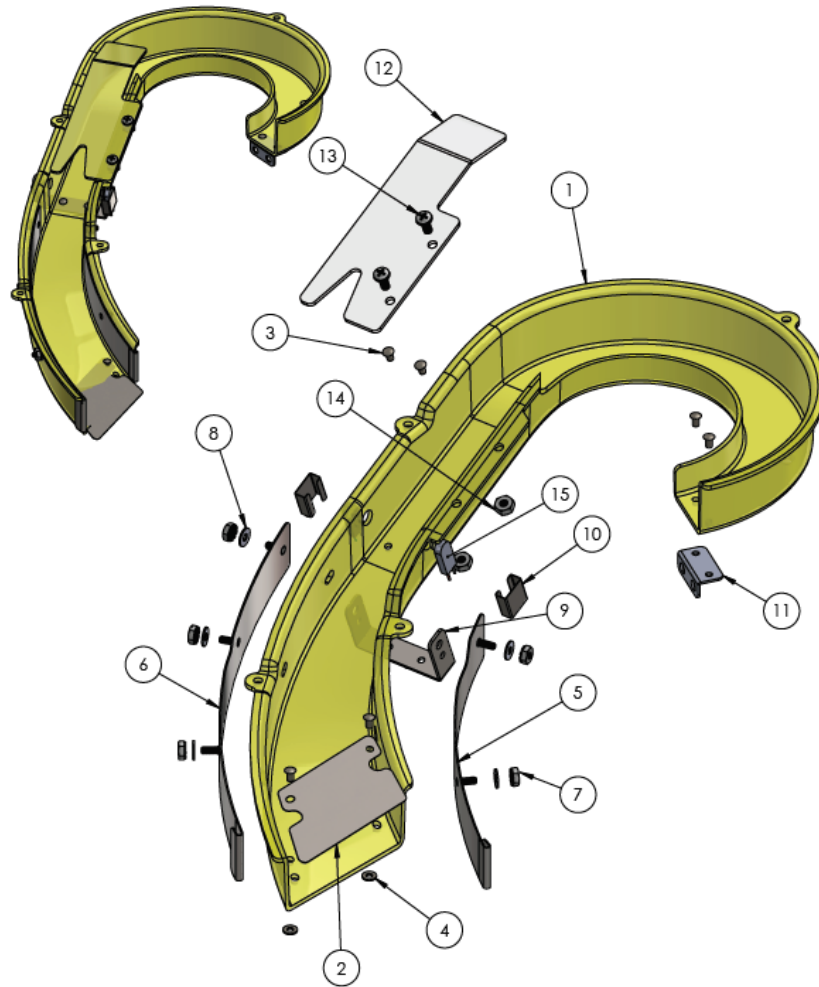
ITEM NO.	PART NUMBER	DESCRIPTION	QTY.
1	MTL0158-00	POWER SUPPLY BASE	1
2	ELE0019-00	MEANWELL RSP-750-48	1
3	MTL0159-00	POWER SUPPLY COVER	1
4	ELE0018-00	MEANWELL LSR-150-12	1
5	ELE0017-00	MEANWELL LSR-50-5	1
6	MAS0025-08	1/4 - 20 X 1/2" PPH MS	4
7	MAS30MM-6M	M3 X 6MM PPH MS	4
8	MAS40MM-6M	M4 X 6MM PPH MS	3
9	MAS2008-06	8-32 X 3/8" HWH MS ZINC	2
10	003091061	MOLEX .093 6 PIN RECEPTACLE	1
11	003091091	MOLEX .093 9 PIN RECEPTACLE	1
12	003092061	MOLEX .093 6 PIN PLUG	1
13	003091125	MOLEX .093 12 PIN RECEPTACLE	1
14	WCA0051-00	POWER SUPPLY CABLE NOT SHOWN	1



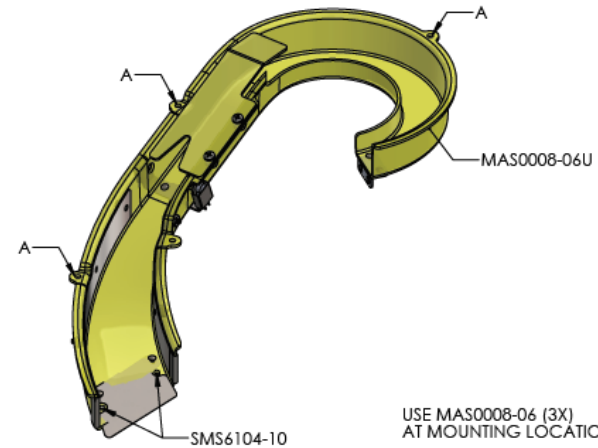
	UNLESS OTHERWISE SPECIFIED: NO SHARP CORNERS AND EDGES. TOLERANCES(DIMS ARE IN INCHES) ANGULAR: MAX/CS. 5 DEG BEND ± 1 DEG FRACTIONAL: ± .020 .31: ±.015 .36: ±.010 .3000: ±.005 .30000: ±.0001 FINISH 125RMS DO NOT SCALE DRAWING		AMERICAN PINBALL 1448 Yorkshire Dr. Streamwood, IL 60178 MATERIAL: AS PER BOM FINISH:	
	DESCRIPTION: CABINET POWER SUPPLY SIZE DWG. NO. B ASM0096-00 REV		DRAWN DATE: 8/12/18 SCALE: 1/2 SHEET 1 OF 1	

PROPRIETARY AND CONFIDENTIAL: THE INFORMATION CONTAINED IN THIS DRAWING IS THE SOLE PROPERTY OF AMERICAN PINBALL. ANY REPRODUCTION IN PART OR AS A WHOLE WITHOUT THE WRITTEN PERMISSION OF AMERICAN PINBALL IS PROHIBITED.


Plastic Ramp ASM0097-00



ITEM NO.	PART NUMBER	DESCRIPTION	QTY.
1	PLS0069-04A	BARTENDER RAMP	1
2	MTL0127-00	OF RAMP FLAP	1
3	SPC0005-02	1/8" X 7/32" LONG X 7/32" HEAD NICKEL RIVET	6
4	WAS0004-00	#4 FLAT WASHER	2
5	MTL0160-00B	OKTOBERFEST RAMP PROTECTOR - RIGHT	1
6	MTL0161-00B	RAMP PROTECTOR (LEFT)	1
7	NUT1006-00	6-32 KEPS NUT	5
8	WAS0006-00	#6 FLAT WASHER	5
9	MTL0033-00	RAMP OPTO BRACKET	1
10	MTL0097-00	OPTO RETAINER	2
11	MTL0092-00	WIRE RAMP EXIT PLATE	1
12	PLS0057-34E	RAMP DEFLECTOR PLATE	1
13	MAS0008-06	8-32 X 3/8" PPH MS ZINC	2
14	NUT0008-00	8-32 NYLON LOCKNUT - LOW PROFILE	2
15	WCA0016-00A	OPTEK OPTO CABLE ASSEMBLY	1



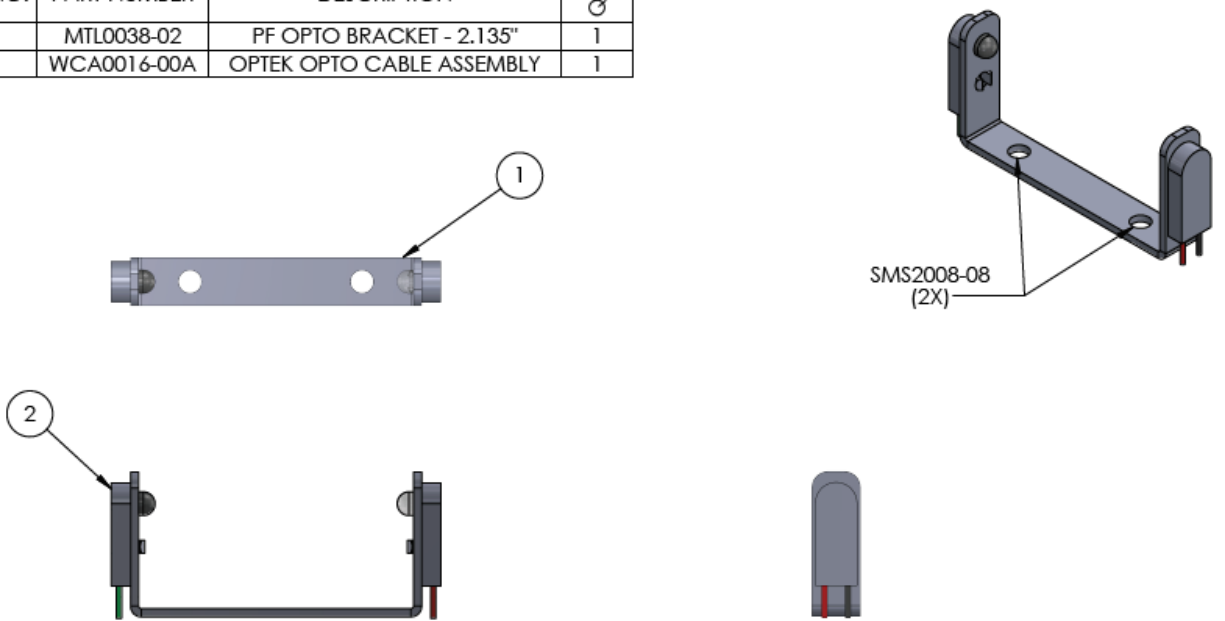
USE MAS0008-06 (3X)
AT MOUNTING LOCATION 'A'


	UNLESS OTHERWISE SPECIFIED: NO SHARP CORNERS AND EDGES. TOLERANCES/DIMES ARE IN INCHES ANGULAR: MAX±.5 DEG BEND ±1 DEG FRACTIONAL: ±.020 J: ±.015 JOK: ±.010 JOKK: ±.005 JOKKK: ±.0001 FINISH 125RMS DO NOT SCALE DRAWING	AMERICAN PINBALL MATERIAL: AS PER BOM FINISH: NONE	1448 Yorkshire Dr. Streamwood, IL 60107 DESCRIPTION: OKTOBERFEST PLASTIC RAMP ASSEMBLY SIZE DWG. NO. B ASM0097-00 REV
	DRAWN BY: RM DRAWN DATE: 6/17/2019 SCALE: 1:2 SHEET 1 OF 1		

PROPRIETARY AND CONFIDENTIAL: THE INFORMATION CONTAINED IN THIS DRAWING IS THE SOLE PROPERTY OF AMERICAN PINBALL. ANY REPRODUCTION IN PART OR AS A WHOLE WITHOUT THE WRITTEN PERMISSION OF AMERICAN PINBALL IS PROHIBITED.

Single Opto ASM0104-01

ITEM NO.	PART NUMBER	DESCRIPTION	QTY.
1	MTL0038-02	PF OPTO BRACKET - 2.135"	1
2	WCA0016-00A	OPTEK OPTO CABLE ASSEMBLY	1



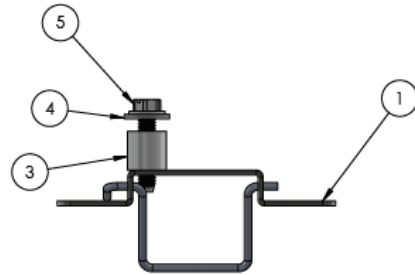
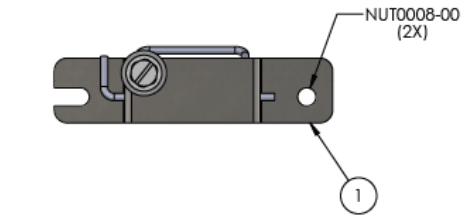
	UNLESS OTHERWISE SPECIFIED: NO SHARP CORNERS AND EDGES. TOLERANCES:(DIM'S ARE IN INCHES) ANGULAR: MACH ± .5 DEG BEND ± 1 DEG FRACTIONAL: ± .020 .X ± .015 .XX ± .010 .XXX ± .005 .XXXX ± .0001 FINISH 125RMS	AMERICAN PINBALL 1448 Yorkshire Dr. Streamwood, IL 60107	DESCRIPTION: 2.135" PF OPTO ASSEMBLY	
	MATERIAL: AS PER BOM	FINISH:	SIZE A	DWG. NO. ASM0104-01
	DO NOT SCALE DRAWING	DRAWN BY: RM	DRAWN DATE: 2/5/2019	SCALE: 1:1
				SHEET 1 OF 1

PROPRIETARY AND CONFIDENTIAL: THE INFORMATION CONTAINED IN THIS DRAWING IS THE SOLE PROPERTY OF AMERICAN PINBALL. ANY REPRODUCTION IN PART OR AS A WHOLE WITHOUT THE WRITTEN PERMISSION OF AMERICAN PINBALL IS PROHIBITED.

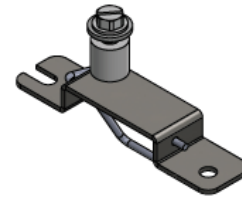
Wire Gate ASm0119-00A


ITEM NO.	PART NUMBER	DESCRIPTION	QTY.
1	MTL0166-00	G2 ONE WAY GATE BRACKET	1
2	WRF0007-00	ONE WAY GATE WIREFORM	1
3	PLS0079-00	3/8" NYLON SPACER - 3/8" OD, .177" ID	1
4	WAS0008-00	#8 FLAT WASHER	1
5	TFS2008-12	8-32 X 3/4" HWH MS ZINC SF THREAD FORMING SCREW	1

REVISIONS			
REV.	DESCRIPTION	DATE	APPROVED
A	ASSEMBLY REDRAWN ADDED PLASTIC SPACER	02/04/2019	



PLS0079-00, WAS0008-00 AND
TFS2008-12 SHOWN FOR
ILLUSTRATION PURPOSE.
TO BE MOUNTED ON
LEG OF WRP0004-01A




	UNLESS OTHERWISE SPECIFIED: NO SHARP CORNERS AND EDGES. TOLERANCES (DIMENSIONS ARE IN INCHES): ANGULAR: \pm .004 @ .5 DEG HOLE: \pm .010 FRACTIONAL: \pm .002 .125: \pm .015 .1875: \pm .010 .250: \pm .005 .3125: \pm .001 FINISH: 125RMS DO NOT SCALE DRAWING	AMERICAN PINBALL MATERIAL: AS PER BOM FINISH: NONE	1448 Yorkshire Dr. Streamwood, IL 60107 DESCRIPTION: ONE WAY GATE ASSEMBLY
	DO NOT SCALE DRAWING	DRAWN BY: RM	SIZE: B DWG. NO.: ASM0119-00

PROPRIETARY AND CONFIDENTIAL: THE INFORMATION CONTAINED IN THIS DRAWING IS THE SOLE PROPERTY OF AMERICAN PINBALL. ANY REPRODUCTION IN PART OR AS A WHOLE WITHOUT THE WRITTEN PERMISSION OF AMERICAN PINBALL IS PROHIBITED.

Bumper Ring ASM0152-00

ITEM NO.	PART NUMBER	DESCRIPTION	QTY.
1	MCH0012-00	BUMPER RING	1
2	MCH0013-00	BUMPER ROD	2
3	WAS0006-00	#6 FLAT WASHER	4
4	HEX0406-16	1/4" HEX SPACER X 1" 6-32 FEMALE TAPPED ENDS	2

SCALE 1:1



UNLESS OTHERWISE SPECIFIED:
NO SHARP CORNERS AND EDGES.
TOLERANCES:(DIM'S ARE IN INCHES)
ANGULAR: MACH±.5 DEG
BEND ± 1 DEG
FRACTIONAL:± .020
.X- ±.015
.XX- ±.010
.XXX- ±.005
.XXXX- ±.0001
FINISH 125RMS

DO NOT SCALE DRAWING

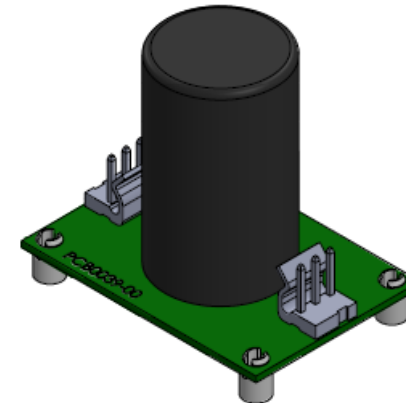
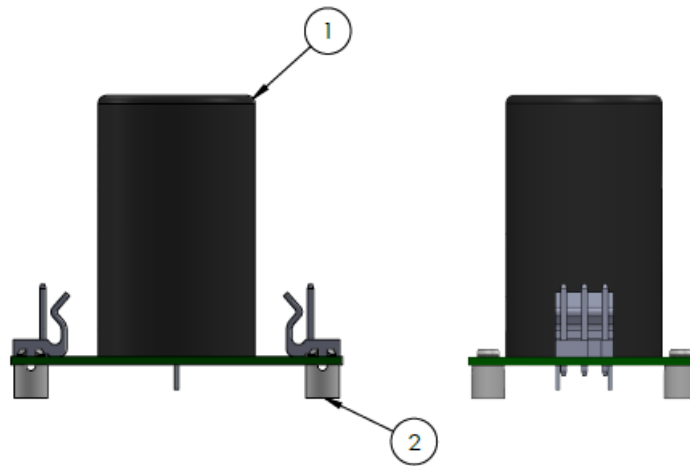
AMERICAN PINBALL
MATERIAL:
AS PER BOM
FINISH:

1448 Yorkshire Dr. Streamwood, IL 60107
DESCRIPTION:
OKTOBERFEST TOP BUMPER ASSEMBLY
SIZE DWG. NO. **A** ASM0152-00 REV
DRAWN BY: RM DRAWN DATE:12/24/2018 SCALE: 1:2 SHEET 1 OF 1


PROPRIETARY AND CONFIDENTIAL: THE INFORMATION CONTAINED IN THIS DRAWING IS THE SOLE PROPERTY OF AMERICAN PINBALL. ANY REPRODUCTION IN PART OR AS A WHOLE WITHOUT THE WRITTEN PERMISSION OF AMERICAN PINBALL IS PROHIBITED.

48 Volt Filter Board ASM0155-00

ITEM NO.	PART NUMBER	DESCRIPTION	QTY.
1	PCB0039-00	48V DC FILTER BOARD	1
2	PLS0025-00	NYLON PCB SUPPORT #4X1/4"	4

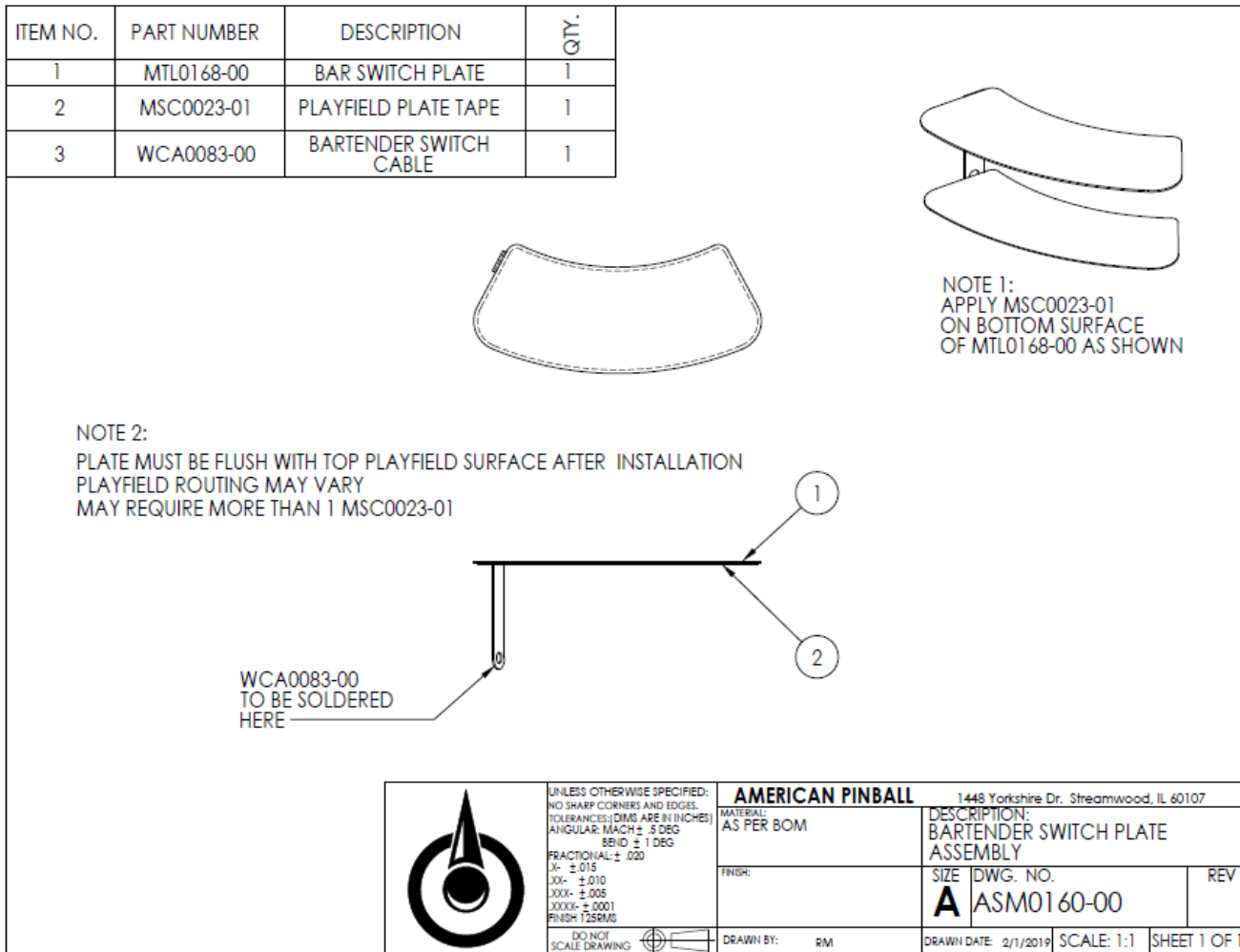


NOTES :
 1) USE SMS0004-10 FOR MOUNTING
 2) WIRED WITH WCA0085-00

	UNLESS OTHERWISE SPECIFIED: NO SHARP CORNERS AND EDGES. TOLERANCES: (DIM'S ARE IN INCHES) ANGULAR: MATCH ± 5 DEG BEND ± 1 DEG FRACTIONAL: ± .020 .X- ±.015 .XX- ±.010 .XXX- ±.005 .XXXX- ±.0001 FINISH: 125RMS	AMERICAN PINBALL		1448 Yorkshire Dr. Streamwood, IL 60107
	MATERIAL: AS PER BOM	DESCRIPTION: 48V FILTER BOARD ASSEMBLY		
FINISH:	SIZE A	DWG. NO. ASM0155-00	REV	
DO NOT SCALE DRAWING	DRAWN BY: RM	DRAWN DATE: 12/20/2018	SCALE: 1:1	SHEET 1 OF 1

PROPRIETARY AND CONFIDENTIAL: THE INFORMATION CONTAINED IN THIS DRAWING IS THE SOLE PROPERTY OF AMERICAN PINBALL. ANY REPRODUCTION IN PART OR AS A WHOLE WITHOUT THE WRITTEN PERMISSION OF AMERICAN PINBALL IS PROHIBITED.

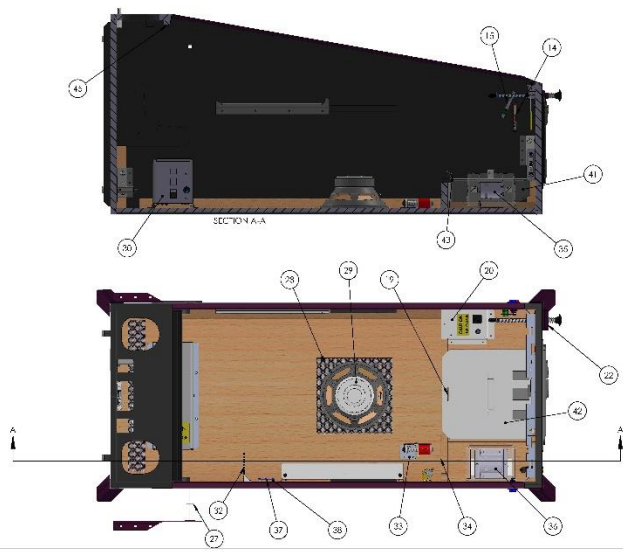
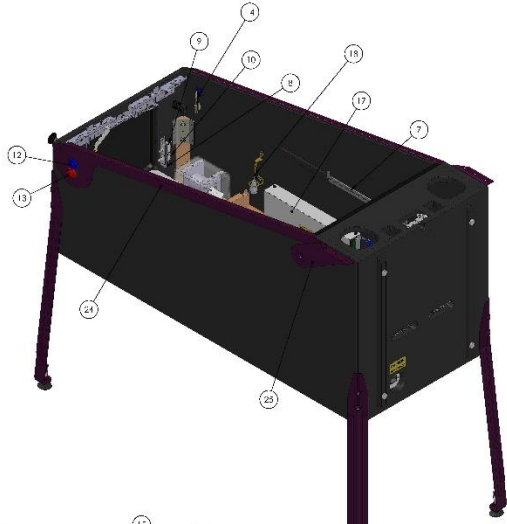
Bartender Switch Plate ASM0160-00



PROPRIETARY AND CONFIDENTIAL: THE INFORMATION CONTAINED IN THIS DRAWING IS THE SOLE PROPERTY OF AMERICAN PINBALL. ANY REPRODUCTION IN PART OR AS A WHOLE WITHOUT THE WRITTEN PERMISSION OF AMERICAN PINBALL IS PROHIBITED.

Cabinet

ITEM NO.	PART NUMBER	DESCRIPTION	QTY.
	W0000001	ON/OFF SWITCH, TYPICAL CABINET	1
2	MT000260	CABINET PROTECTOR, LEG BRACKET	4
3	MT000260	LEG MOUNTING PLATE	4
7	MT000430	UNIVERSAL VERBI DRILL	2
5	PC500000	CABINET TRAY W/ ASS CHAIN/FR	1
6	MT000430	MT000430-R CH/ CABINET SLIDE PIVOT BENT	1
7	MT000430	MT000430-L CH/ CABINET SLIDE PIVOT BENT	1
9	MT000200	CONTROL SWITCH, BLACK, 20A	1
9	SW000200	INTERLOCK SWITCH, 28 C.A. (E200)CGL, 10A 1/2" x 1 1/2" x .030 TERM.	1
10	SW000200	2 POSITION ON/OFF INTERLOCK POS. BUILT ON SWITCH	1
11	SW000200	TRIP SWITCH, MEDIUM YELLOW	1
12	PLS0100	1 P. PWR. ON-R UP	2
13	PLS0100	TRIPPER SWITCH - 220	1
14	SW000200	TRIPPER SWITCH - 1/2" x 1/2" x .030	2
15	SW000200	1/2" x 1/2" SWITCH DOUBLE CONTACT	1
15	PLR000000	HAIR CONTROL CONTROL BOARD 20" x 20" W/ WIRE	1
17	ASV000000	CABINET T-1 ASSEMBLY	1
18	ASV000000	CABINET T-1 ASSEMBLY	1
19	MT000260	CABINET LOCK BRACKET	1
20	ASV000000	CABINET POWER BOX ASSEMBLY	1
21	PLR000000	CONTROL BOARD LATCH	1
22	ASV000000	BALL BEARING ASSEMBLY ON/OFF SW. ROSE CAS. #111 B	1
25	MT000430	CABINET TRAY W/ ASS CHAIN/FR	1
24	MT000430	CABINET TRAY W/ ASS CHAIN/FR	1
25	MT000430	CABINET TRAY W/ ASS CHAIN/FR	1
26	MT000430	CABINET TRAY W/ ASS CHAIN/FR	1
27	PLS000000	INGL WASHIE PLASIE	2
28	MT000260	SPEAKER GRILL	1
29	PC500000	SUSPENSION POINT CORN 4 CH/FR	1
30	ASV000000	CABINET POWER SUPPLY	1
45	PC500000	SACK BOX (F) BOARD	1
52	PLS000000	2.5" CUBIC ADDER	1
55	ASV000000	APRIL 2000 R ASSEMBLY	1
34	MT000260	LOCKER PLATE	1
35	ASV000000	SHARER MOTOR ASSEMBLY	1
36	PLS000000	SHARER MOTOR COUPLER	1
37	PC500000	STEPPER MOTOR PCB BOARD	1
38	PLS000000	W/ ON PCB SUPPORT W/ X 1/2"	4
39	MT000430	CONTROL LEG, ROSE CAS. #111 B	4
40	MT000430	2.75" ELEVATOR	4
41	PLS000000	BLACK PLASTIC CABINET	1
42	MT000260	HAIR PIN CLIP	1
43	W0000001	HAIR PIN CLIP	1
44	PLR000000	CABINET LEVER ASSEMBLY	1



AMERICAN PINBALL
 1400 York Ave. St. Louis, MO 63103
 TEL: 314-241-1111 FAX: 314-241-1112
 WWW.AMERICANPINBALL.COM
 © 2000 AMERICAN PINBALL
 ALL RIGHTS RESERVED

LA0006-00
 REV. 001
 00000000

