



Service Installation: Klocker Kit

November 9, 2018

SI-11918

Written by BTA

KNOCKER KIT INSTALLATION

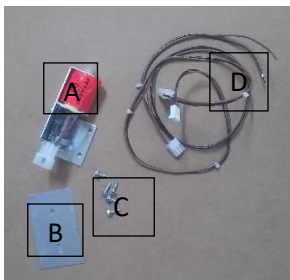
PROCEDURE:

Parts Needed: Klocker Kit

Tools Needed: 1/4" Nut Driver, Small Screwdriver.

INSTRUCTIONS:

1) Review your kit to make sure everything is included



#	Qty	Description
A	1	Coil and bracket
B	1	Knocker Plate
C	5	1/4" Screws
D	2	Connectors
	1	4 ASB 5X20 mm Fuse

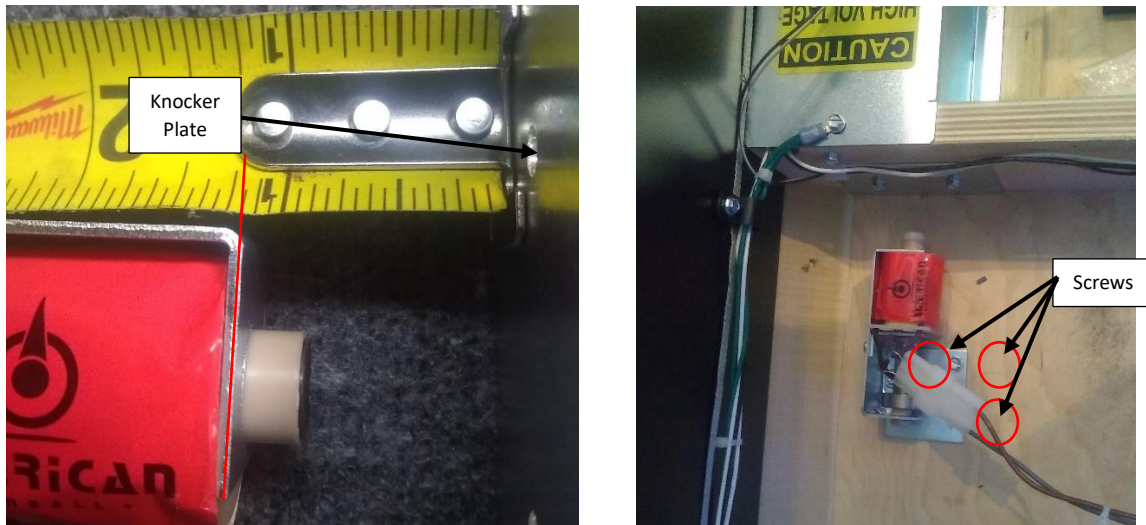
2) Make sure the game is powered off and unplugged. Raise the Playfield so it is resting against the head.



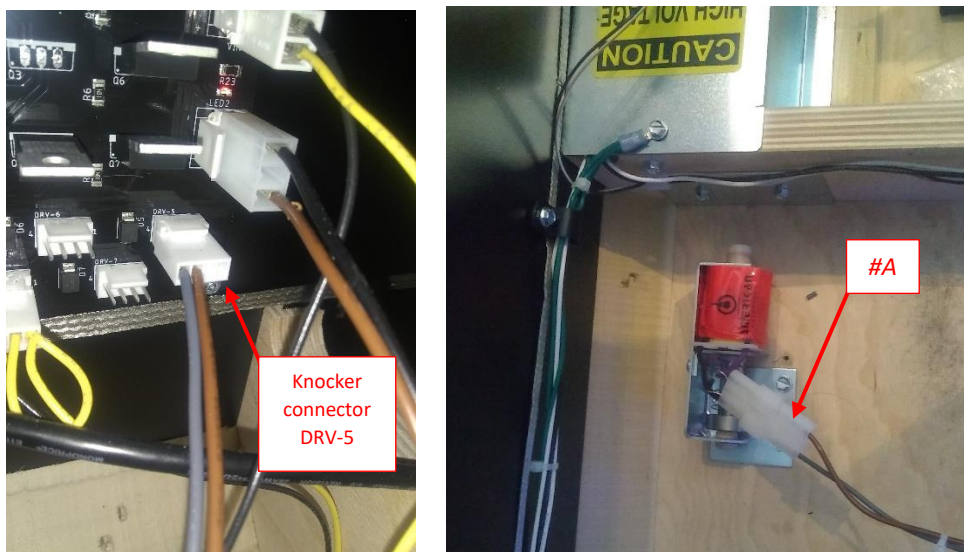
3) Position the Knocker Plate on the right side and Fasten with 2 Screws.



4) Center the Knocker Coil on the Strike Plate, the Front Part of the Metal Bracket Needs to be 1 3/16 away from the Knocker Plate, Fasten with 3 of the 1/4" Screws.

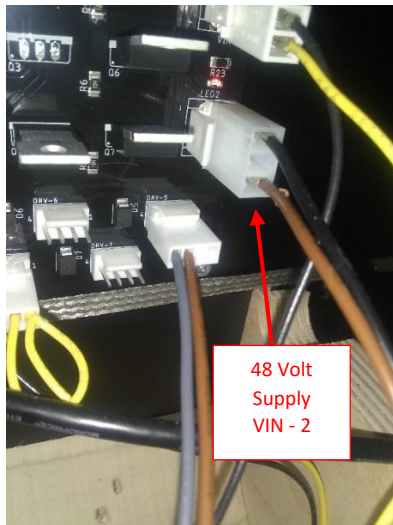


5) Connect the small 4 pin connector to DRV-5 on the ADD ON BOARD, then connect the other end to the Knocker Coil - #A. (The ADD ON BOARD is on the inside left wall of the cabinet farthest from the front)

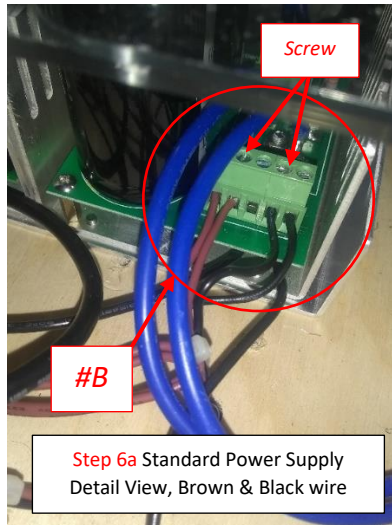


6a) *If you have the optional Power Supply Kit installed skip to step 6b) otherwise continue with this step.* Connect the 48 Volt supply wire to VIN - 2 on the ADD ON BOARD and connect the other end to the 48 Volt Power Supply, Brown to Brown and Black to Black #B. Loosen screw and insert wire and retighten. *(The Power supply is in the bottom of the cabinet, farthest from the front)*

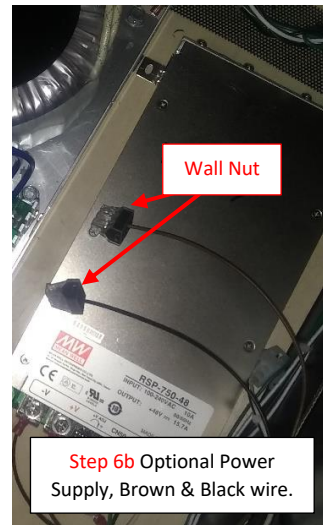
6b) *If you have the optional Power Supply Kit installed continue with this step, otherwise skip to step 7.* Connect the 48 Volt supply wire to VIN - 2 on the ADD ON BOARD and connect the other end to, Brown Wire to the Brown Wire Wall-Nut and the Black Wire to the Black Wire Wall-Nut coming from your Switching Power Supply.



48 Volt
Supply
VIN - 2

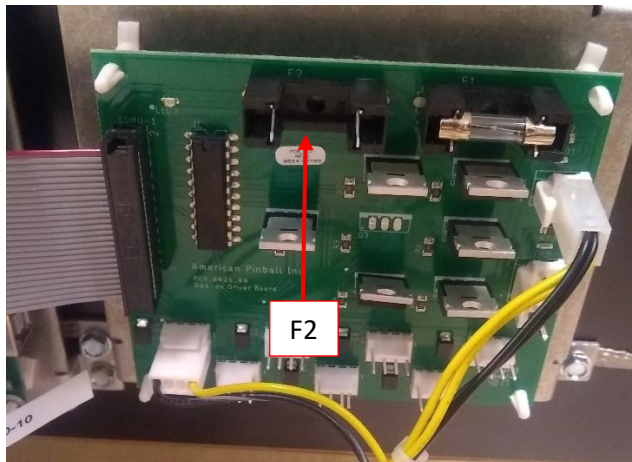


Step 6a Standard Power Supply
Detail View, Brown & Black wire



Step 6b Optional Power
Supply, Brown & Black wire.

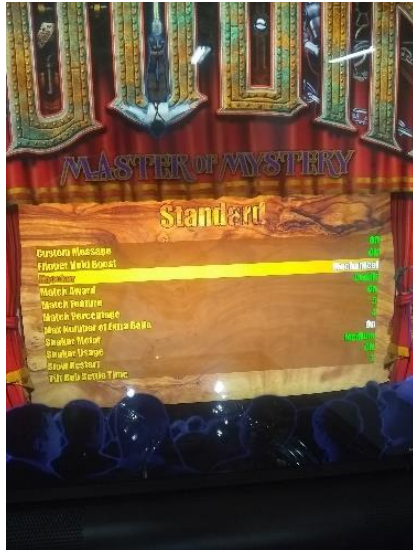
7) Insert the 4 Amp Slow Blow 5X20 mm Fuse into F2 of the ADD ON BOARD.



F2

8) Plug in the machine and power on.

9) Put the machine into Test>Adjustments>Standard. Change the KNOCKER setting to “Mechanical”. Exit test mode and enjoy your new KNOCKER!



NEED HELP?

833-API-HELP